

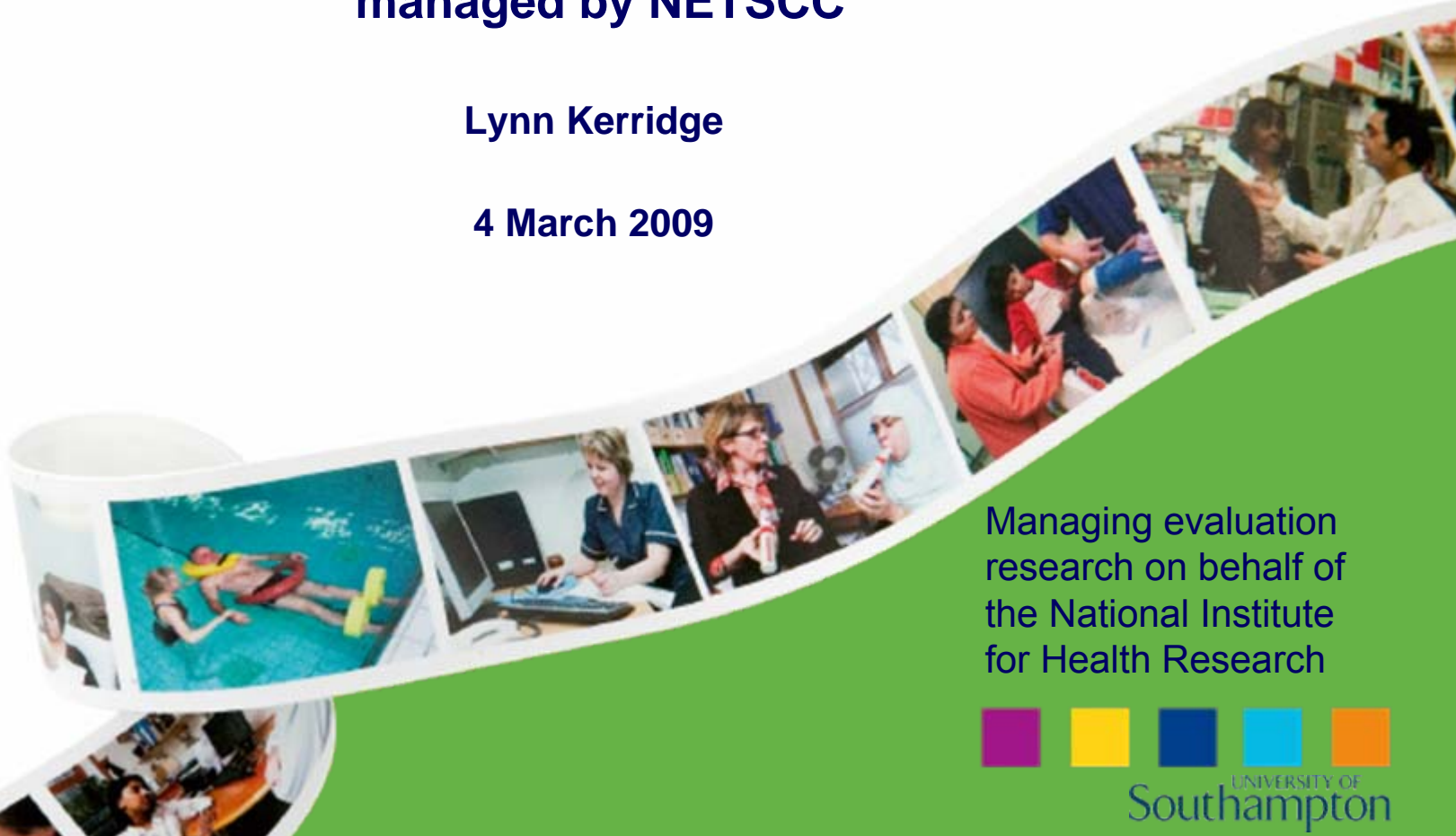


NIHR, Evaluation, Trials and Studies Coordinating Centre

Evaluation research programmes managed by NETSCC

Lynn Kerridge

4 March 2009



Managing evaluation
research on behalf of
the National Institute
for Health Research





NETSCC, managing evaluation research programmes on behalf of the NIHR

- ▶ **Management of evaluation research programmes on behalf of the NIHR**
 - ▶ Efficacy and Mechanism Evaluation programme
 - ▶ NIHR Health Services Research programme
 - ▶ NIHR Health Technology Assessment programme
 - ▶ NIHR Public Health Research programme
 - ▶ NIHR Service Delivery and Organisation programme



NETSCC's Needs-led and Science-added approach for NIHR programmes

- ▶ We are

Needs-led

because we assess what are the important questions and in what priority they should be answered.

- ▶ We are

Science-added

because we ask does the proposal meet the scientific quality we insist on, and how can we support the delivery of quality?

- ▶ We provide

Value for money

because assessment of need and scientific support maximises the relevance and benefits achievable within a funding stream



Full and appropriate funding

- ▶ We provide

Full and appropriate funding

because we place no upper limit on the amount of funding granted for a project

- ▶ University based projects: we fund up to 80% of the Full Economic Cost (FEC)
- ▶ NHS Trust based projects: we fund 100% of the direct costs
- ▶ Other organisations are also welcome to apply



Efficacy and Mechanism Evaluation programme

► Purpose and Remit

The **EME** programme is aimed at supporting 'science driven' studies with an expectation of substantial health gain.

Proposed research must evaluate the clinical efficacy of an intervention, where proof of concept in humans has already been achieved.

The EME programme is funded by the Medical Research Council and managed by NETSCC

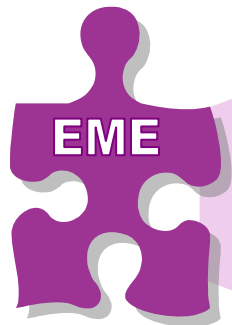
The EME programme was launched in April 2008 and has a predicted annual budget of £15m by 2011/12

► For more information

For more information and to apply for funding please visit

www.eme.ac.uk

EME programme funding opportunities



EME
Priority Setting

EME
Researcher-led

	Types of Research	Who defines the question?	Frequency Per year
Priority Setting	Primary Research; Clinical efficacy of interventions;	EME programme	As required
Researcher-led	Primary Research; Clinical efficacy of interventions;	Researcher	Continuous with 3 closing dates

- ▶ EME will not support incremental modifications or refinements of existing technologies
- ▶ EME will not support proof of concept or proof of mechanisms in humans (i.e. early phase clinical trials)

EME programme highlights

- ▶ The EME programme works seamlessly with and sits between MRC programmes and the NIHR HTA programme
- ▶ Since EME was launched in April 2008 it has received over 130 applications for funding
- ▶ The time taken from initial application to a funding decision is around 8 months
- ▶ 6 existing MRC funded clinical trials will in future be managed by the EME programme
- ▶ The first EME study has been funded subject to changes and we expect to fund our first full tranche of studies after the March 2009 Board meeting.

NIHR Health Services Research programme

► Purpose and Remit

The **HSR** programme provides funding for a broader range of health services research than is already run by the NIHR.

The HSR programme will fund areas that are not currently funded, either due to remit or cost, by existing NIHR, DH and MRC programmes.

Researchers will be invited, on an ongoing basis, to submit proposals for both primary research and evidence syntheses.

The HSR programme will either fund multiple small studies or a single large study of national or international importance that would be beyond the capacity of other funders.

► History

Launched in October 2008

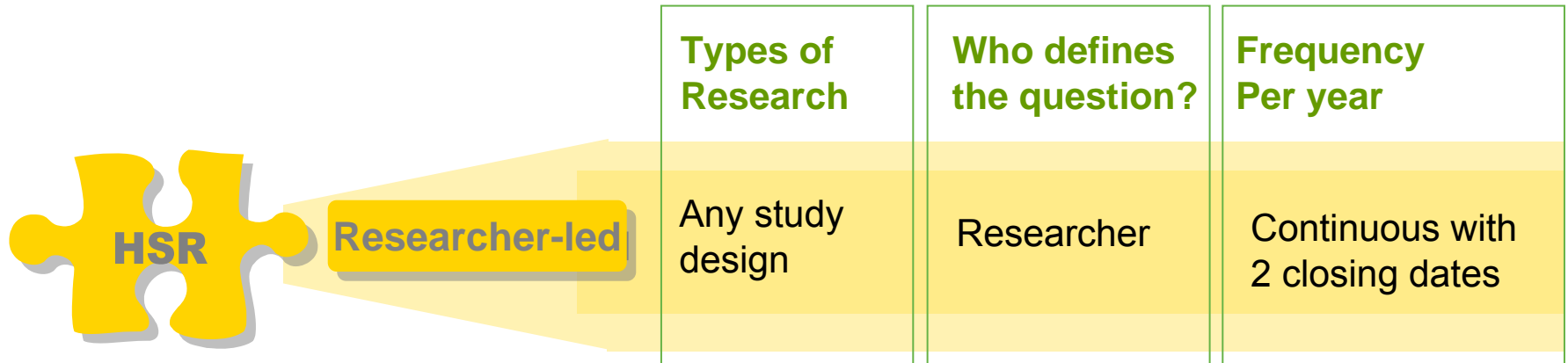
► Contact HSR

For more information and to apply for funding visit

www.hsr.nihr.ac.uk

HSR programme Funding opportunities

- ▶ The HSR programme has an predicted annual budget of £5m by 2011/12
- ▶ The HSR Programme will initially offer a Researcher-led funding stream with the possibility of a commissioned workstream later.





HSR programme highlights

- ▶ Initial expression of interest call issued in January 2009 and will remain open until further notice (see www.hsr.nihr.ac.uk)
- ▶ It is anticipated that the first projects will be funded in early 2010
- ▶ Professor Ray Fitzpatrick, University of Oxford, has been appointed the programme director and will take office in April 2009.

NIHR Health Technology Assessment programme

▶ Purpose and Remit

The **HTA** programme delivers research information about the effectiveness, costs and broader impact of healthcare treatments and tests for those who plan, provide or receive care in the NHS.

▶ History

Since its inception in 1993 the HTA programme has invested over £280m in more than 800 research projects.

This is set to increase significantly with the predicted annual budget rising to £88m by 2011/12.

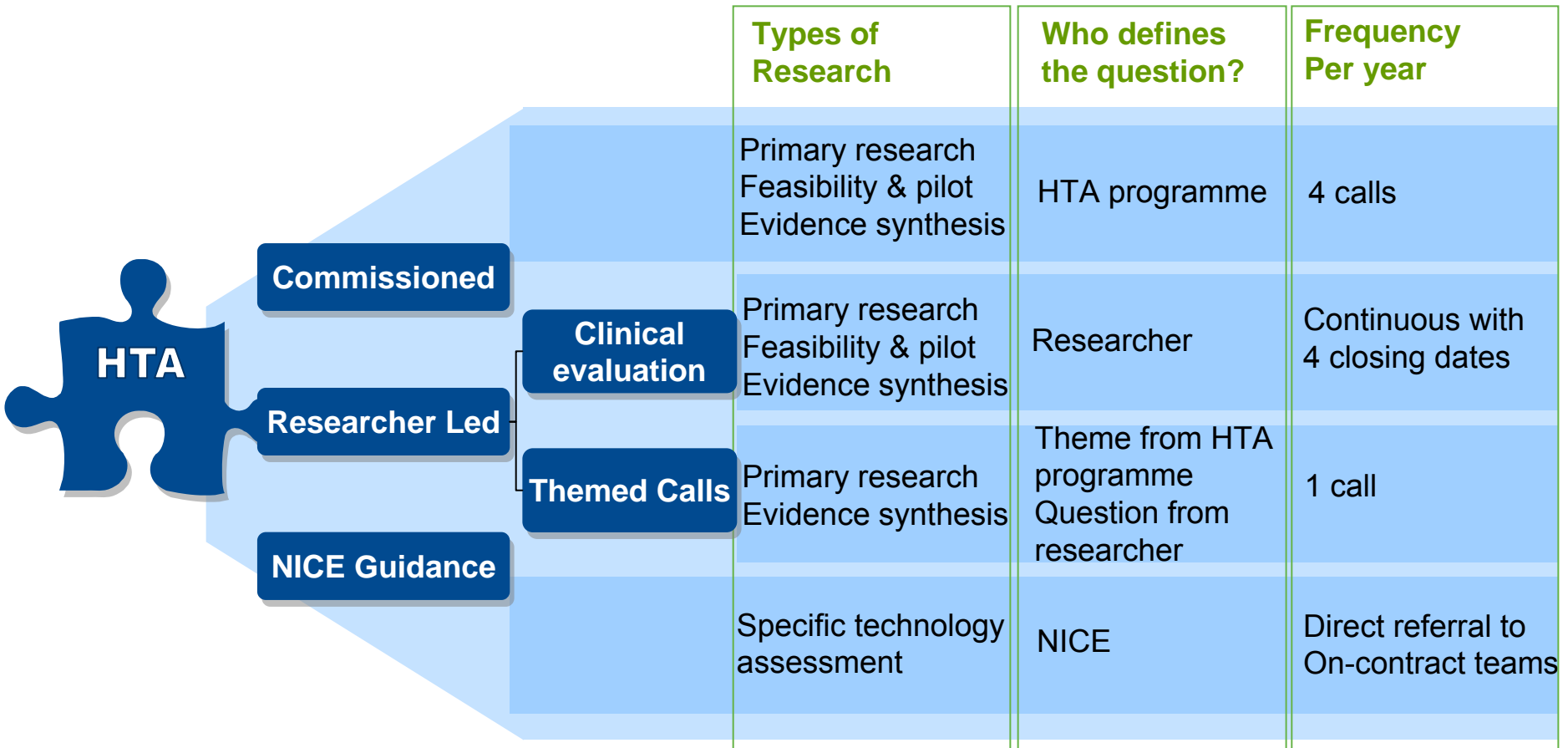
▶ Contact HTA

For more information and to apply for funding visit

www.hta.ac.uk

HTA funding opportunities

- ▶ The HTA programme offers 3 funding workstreams:



HTA programme highlights

- ▶ For topic prioritisation we have expanded from four to six panels, established a new group and recruited 80 new panel members
- ▶ We have 3 funding boards and 1 editorial board
- ▶ Sample size of a HTA randomised control trial:
 - ▶ Median of the number of patients involved in each trial = 750
 - ▶ Range of 34 to 100,000 across current live projects
- ▶ 81% of HTA funded projects included “Public Patient Involvement”
- ▶ NICE Technology Assessment Reports
 - ▶ 135 multiple technology appraisals and 39 single technology appraisals have been completed
- ▶ Papers published in some key journals over the past 5 years:
 - ▶ BMJ – 41
 - ▶ The Lancet – 14
 - ▶ New England Journal of Medicine - 3

NIHR Public Health Research programme

► Purpose and Remit

The PHR programme evaluates public health interventions, providing new knowledge on the benefits, costs, acceptability and wider impacts of **non-NHS** interventions intended to improve the health of the public and reduce inequalities in health.

The scope of the programme is multi-disciplinary and broad covering a range of public health interventions.

► History

The PHR programme was launched in Autumn 2008

► Contact PHR

For more information and to apply for funding visit

www.phr.nihr.ac.uk

PHR programme funding opportunities

- ▶ The predicted annual budget is £10m by 2011/12
- ▶ The PHR programme offers 2 funding workstreams: Commissioned and Researcher-led

	Types of Research	Who defines the question?	Frequency Per year
Commissioned	Non-NHS Primary research Evidence synthesis	PHR programme	As Required
Researcher-led	Non-NHS Primary research Evidence synthesis	Researcher	Continuous with 3 closing dates



PHR programme highlights

- ▶ Initial Expression of Interest issued in November 2008 and resulted in 75 replies
- ▶ First call for proposals closed in January 2009 and resulted in 47 proposals
- ▶ First meeting of Programme Advisory Board to establish public health importance of first call proposals was held 25 February 2009.
- ▶ Second call opened 2 March, cut-off date is the 3 June 2009.



NIHR Service Delivery and Organisation Programme

► Purpose and Remit

It aims to improve health outcomes for people by commissioning research evidence that improves practice in relation to the organisation and delivery of healthcare.

► History

The SDO programme is joining NETSCC in April 2009 having previously been managed from the London School of Hygiene & Tropical Medicine since 1999.

► Contact SDO

For more information and to apply for funding visit

www.sdo.nihr.ac.uk

SDO programme funding opportunities

- ▶ The predicted annual budget is £11m by 2011/12
- ▶ The SDO programme funds through commissioned and researcher-led funding streams through the Priority Areas, Evaluations, and SDO Studies panels.



Commissioned

Priority areas

Evaluations

Researcher-led

SDO studies

Types of Research	Who defines the question?	Frequency Per year
Primary research Evidence synthesis Empirical studies	SDO programme	4 calls
Primary research Evidence synthesis Empirical studies	NHS SDO programme Researcher	Continuous with 2 closing dates
Primary research Evidence synthesis Empirical studies	Researcher	Continuous with 2 closing dates



SDO programme highlights

▶ **Award winning publications and outputs**

- ▶ Baxter award (2006) from the European Health Management Association for 'Diffusion of Innovations in Health Service Organisations' (Greenhalgh)
- ▶ British Academy of Management Book of the Year (2005) for "Organisational Change" (Iles and Sutherland)

▶ **Transfer to NETSCC**

- ▶ The current portfolio includes around 130 active and 110 completed projects
- ▶ Three panels will begin work this year:
 - ▶ The Priority Areas panel
 - ▶ The SDO Studies panel
 - ▶ Evaluations panel

▶ **Upcoming events**

- ▶ Joint SDO and HSRN Conference 3rd - 4th June, 2009 Birmingham