

**Making your research available through UK PubMed Central**

NIHR

Joint Health Research Conference

**Paul Davey,**

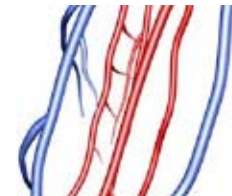
**UK PubMed Central Engagement Manager**

# What is UK PubMed Central?

- A place to freely access a vast collection of biomedical and health research literature (more than 1.3 million articles, and growing)
- Supported by UK's principal funders of research



- An exciting development programme to benefit the research community



# The Department of Health view

Research Government framework – clear policy to provide free access to research being undertaken and its findings (following appropriate review)

Preservation of research outputs for current, and future, generations to access

Development of systems which will link to UK PubMed Central to Department of Health's own systems through NIHR

Electronic copies of any research papers accepted for publication **must be submitted** to UK PubMed Central within six months of publication

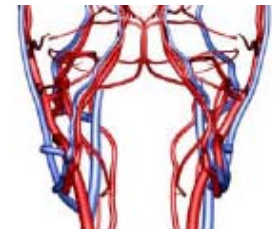


# More on submission: What are DH-funded researcher's responsibilities?

**Department of Health:** Any published peer reviewed research articles arising from DH-funded research grants (in whole, or part) submitted from April 2007 onwards **MUST** be added to UK PubMed Central within six months of publication (see <http://ukpmc.ac.uk/funders> for links to more information)

**Publisher submits** – depends on the journal's policy (you can check which journals are compliant at Sherpa / Romeo service: <http://www.sherpa.ac.uk/romeo/> )

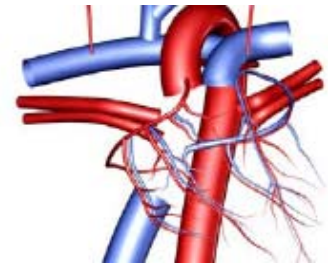
**Sometimes, publisher will not submit themselves. Left to the author** (around 10% of articles). If so, then use our Manuscript Submission System. See <http://ukpmc.ac.uk> – click on top navigation link **Submit Manuscripts**



# Developments and the future

A consortium of project partners are:

- Developing ingenious ways to search, retrieve and link research papers to relevant biomedical and health research knowledge
- Identifying and enabling access to a wide-range of additional, valuable content
- Creating tools to enable users to track research grants: what they are, the research that arose from them, and who they were provided by



# So, again, what is important about it?

We have the backing of key funders in the UK, and the foundations of an exciting working relationship with the NIHR

Our developments will enable researchers to become more efficient and effective

Researcher's visibility will increase, whilst cutting down on duplication

Developing a resource with a UK identity and the needs of our community in mind, whilst building upon the world-wide recognition of PubMed Central in the United States

Finally – this is a resource for you: our researchers and those that support them

HELP US GUIDE OUR DEVELOPMENTS

Contact: [paul.davey@bl.uk](mailto:paul.davey@bl.uk) , UK PubMed Central Engagement Manager