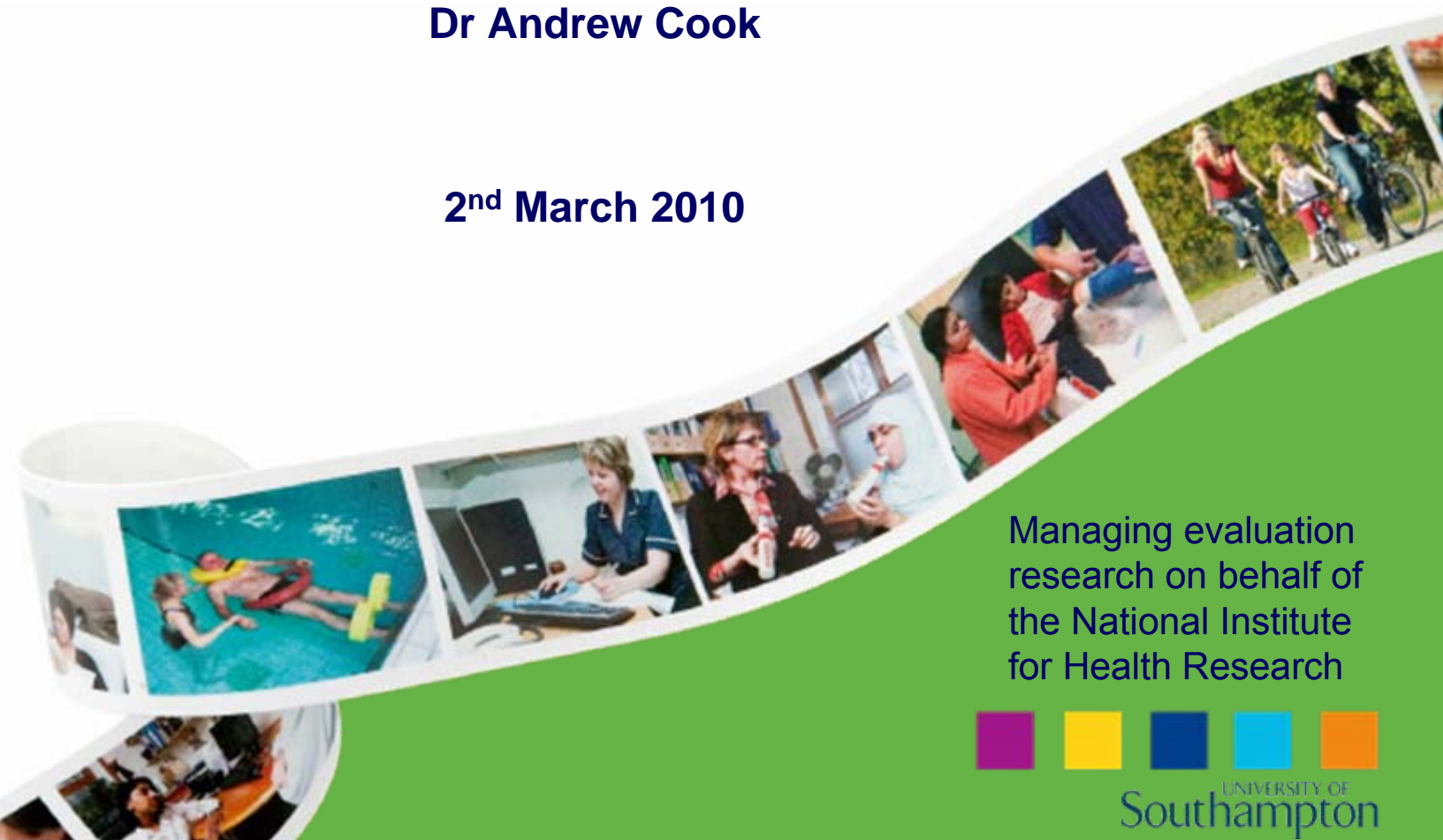


■ ■ ■ ■ ■ ■ ■ ■ ■ ■
NIHR Evaluation, Trials and Studies Coordinating Centre

Dr Andrew Cook

2nd March 2010



Managing evaluation
research on behalf of
the National Institute
for Health Research

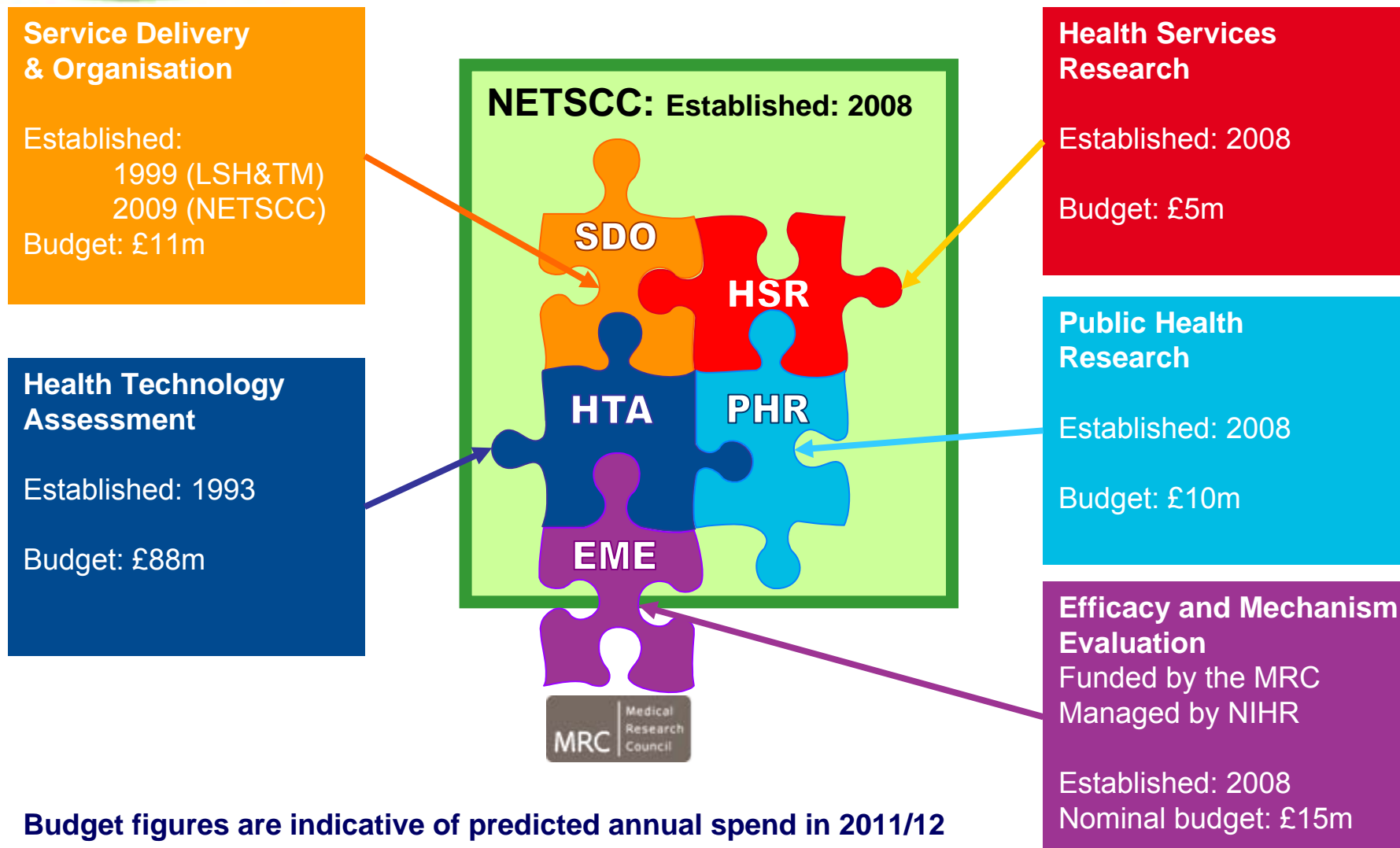




NIHR Evaluation, Trials and Studies Coordinating Centre

Outline

NIHR Evaluation, Trials and Studies (NETS) programmes



Budget figures are indicative of predicted annual spend in 2011/12

Needs-led and science-added approach for NIHR programmes

▶ We are

Needs-led

because we assess what the important questions to the NHS and other information consumers are, and in what priority they should be answered.

▶ We are

Science-added

because we ask does the proposal meet the scientific quality we insist on, and how can we support the delivery of quality.

▶ We provide

Value for money

because assessment of need and scientific support maximises the relevance and benefits achievable within a funding stream.



Funding workstreams

▶ **Commissioned workstream**

- ▶ Starts with the information needs of decision makers typically, but not exclusively, within the NHS.
- ▶ Topics are refined and prioritised by people with expertise in the field, and commissioning briefs are advertised.
- ▶ Applications are then assessed for compliance with the commissioning brief, scientific quality, feasibility and value for money.

▶ **Researcher-led workstream**

- ▶ Open calls for researchers to apply for funding for their own topics and questions.
- ▶ Applications are prioritised in terms of NHS or other information need in a process similar to that in the commissioned workstreams.
- ▶ Applications are then assessed for scientific quality, feasibility and value for money.



Full and appropriate funding

- ▶ We provide **Full and appropriate funding** because we place no upper limit on the amount of funding granted for a project
- ▶ If the question is important enough and the science requires it, we will fund it.
- ▶ University based projects: we fund up to 80% of the Full Economic Cost (FEC)
- ▶ NHS Trust based projects: we fund 100% of the direct costs
- ▶ Other organisations are also welcome to apply

Efficacy and Mechanism Evaluation programme

► Purpose and Remit

The **EME** programme is aimed at supporting 'science driven' studies with an expectation of substantial health gain.

Proposed research must evaluate the clinical efficacy of an intervention, where proof of concept in humans has already been achieved and may also include mechanistic evaluation which would significantly increase our understanding of biological or behavioural mechanisms and processes.

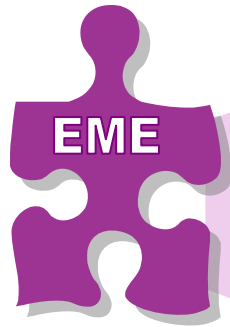
The EME programme is funded by the Medical Research Council and managed by NIHR.

The EME programme was launched in April 2008 and has a nominal annual budget of £15m.

► For more information

For more information and to apply for funding please visit the EME programme website www.eme.ac.uk

EME programme funding opportunities



Translational pull through

Researcher-led

	Types of Research	Who defines the question?	Frequency Per year
Translational pull through	Primary Research; Clinical efficacy of interventions	EME programme	As required
Researcher-led	Primary Research; Clinical efficacy of interventions	Researcher	Continuous with 3 submission deadlines

- ▶ EME will not support incremental modifications or refinements of existing technologies
- ▶ EME will not support proof of concept or proof of mechanisms studies in humans (i.e. early phase clinical trials)

EME programme highlights

- ▶ The EME programme works seamlessly with and sits between MRC programmes and the NIHR HTA programme
- ▶ Since EME programme was launched in April 2008 it has received over 210 applications for funding
- ▶ The time taken from initial application to a funding decision is around 8 months
- ▶ A fast-track scheme is available for applications where reducing the timescale will provide significant benefit, or exploitation of a narrow window of opportunity, for example. Although this can reduce the application process by about 3 months, applicants will need to convince the EME programme of the benefits of following this route.
- ▶ 34 existing MRC funded clinical trials will in future be managed by the EME programme
- ▶ The first eight EME studies have started with a further eleven other projects to follow in 2010

NIHR Health Services Research programme

▶ **Purpose and Remit**

- ▶ The NIHR Health Services Research (HSR) programme funds research to improve health policy, health systems and health care delivery. The HSR programme addresses the three dimensions of quality currently of central concern to the NHS: patient safety, patient experience and effectiveness of care.

Researchers will be invited to submit proposals for both primary research and evidence syntheses through twice-yearly funding calls.

The HSR programme will fund multiple small studies or a single large study of national or international importance that would be beyond the capacity of other funders.

▶ **History**

HSR's first call closed in December 2009.

68 outline and 32 full proposals were received.

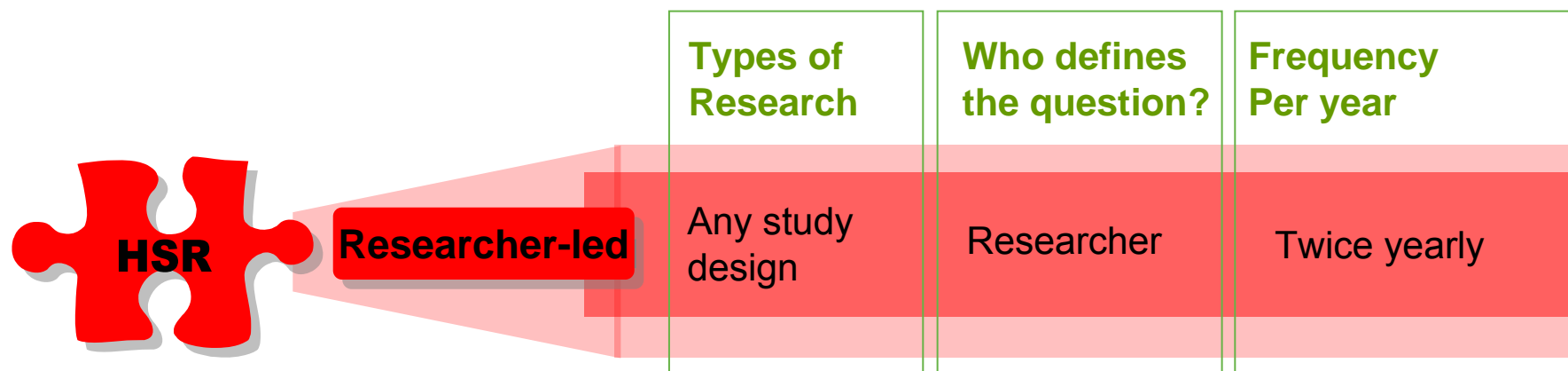
▶ **Contact HSR**

For more information and to apply for funding visit

www.hsr.nihr.ac.uk

HSR programme Funding opportunities

- ▶ The HSR programme has a predicted annual budget of £5m by 2011/12
- ▶ The HSR programme will currently offers a researcher-led funding stream with the possibility of a commissioned workstream later.





HSR programme highlights

- ▶ HSR programme was launched in 2009.
- ▶ Professor Ray Fitzpatrick, University of Oxford, was appointed programme Director
- ▶ Board members have been recruited, and the board met in February 2010, funding 4 full proposals, with 14 more to be assessed in March 2010. A further 16 full proposals will be considered at a board in July 2010.

NIHR Health Technology Assessment programme

▶ Purpose and Remit

To deliver information about the effectiveness, costs and broader impact of healthcare treatments and tests for those who plan, provide or receive care in the NHS.

▶ History

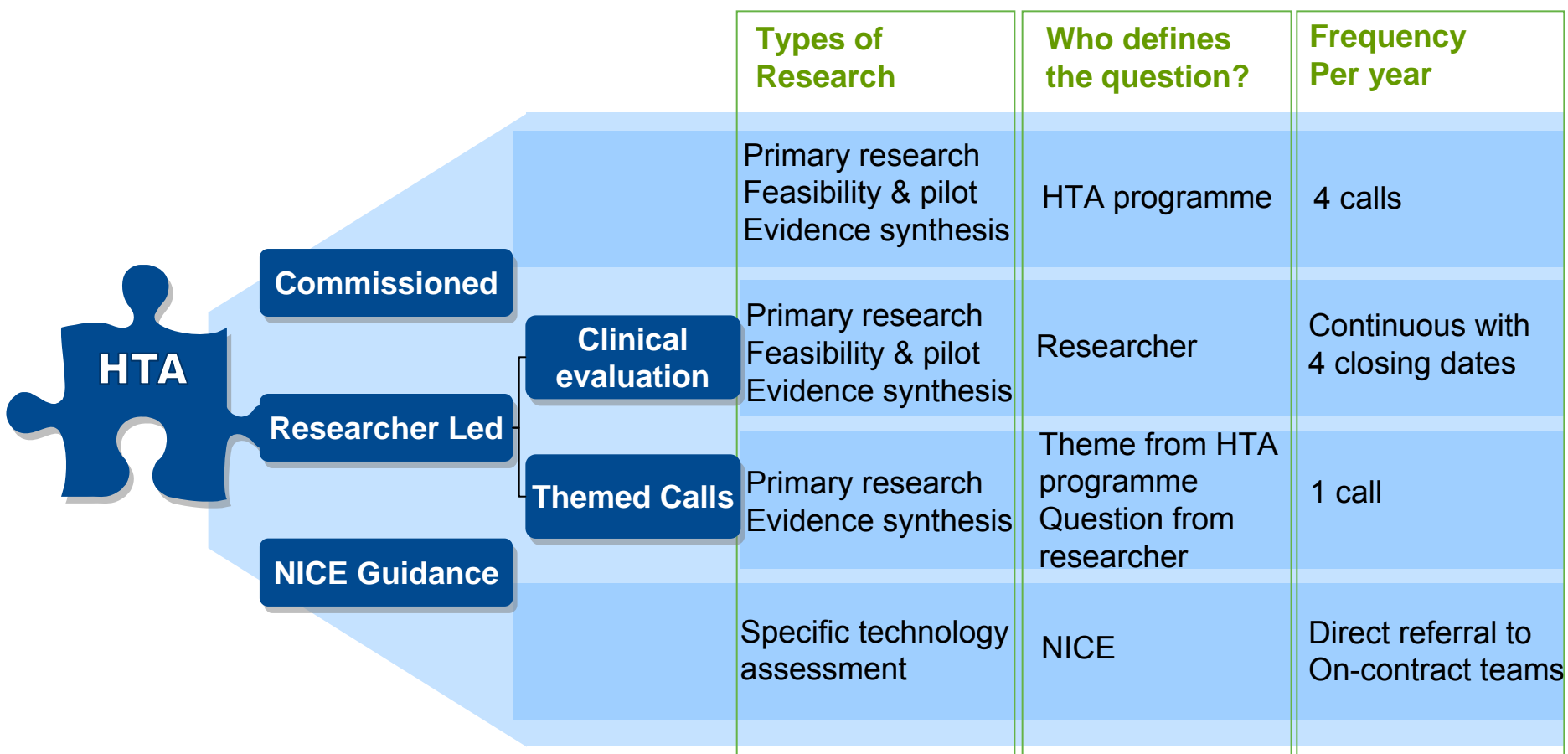
Since its inception in 1993 the HTA programme has invested over £290m in more than 900 research projects.

▶ ***Health Technology Assessment.*** 2008 impact factor places it in the top 10% of medical & health related journals

▶ **Contact HTA** For more information visit www.hta.ac.uk

HTA funding opportunities

- ▶ The predicted annual budget by 2011/12 is £88m
- ▶ The HTA programme offers 3 funding workstreams:



HTA programme highlights

- ▶ HTA programme has invested over £280m in more than 800 projects
- ▶ For topic prioritisation we have expanded from four to six panels, established a new group and recruited 80 new panel members
- ▶ HTA Clinical Evaluation and Trials funding stream also accepts applications for feasibility and pilot studies
- ▶ We have 3 funding boards and 1 editorial board
- ▶ Sample size of a HTA randomised control trial:
 - ▶ Median of the number of patients involved in each trial = 700
 - ▶ Range of 15 to 100,000 across current live projects
- ▶ Over 80% of HTA funded projects include Public Patient Involvement
- ▶ NICE Technology Assessment Reports
 - ▶ To date (Jan 2010) 141 multiple technology appraisals and 50 single technology appraisals have been completed.
- ▶ Papers published in key journals over the past 5 years:
 - ▶ BMJ – 41
 - ▶ The Lancet – 14
 - ▶ New England Journal of Medicine - 3
 - ▶ Annals of Internal Medicine - 3

NIHR Public Health Research programme

► Purpose and Remit

The PHR programme evaluates public health interventions, providing new knowledge on the benefits, costs, acceptability and wider impacts of **non-NHS** interventions intended to improve the health of the public and reduce inequalities in health.

The scope of the programme is multi-disciplinary and broad covering a range of public health interventions.

► History

The PHR programme was launched in Autumn 2008.

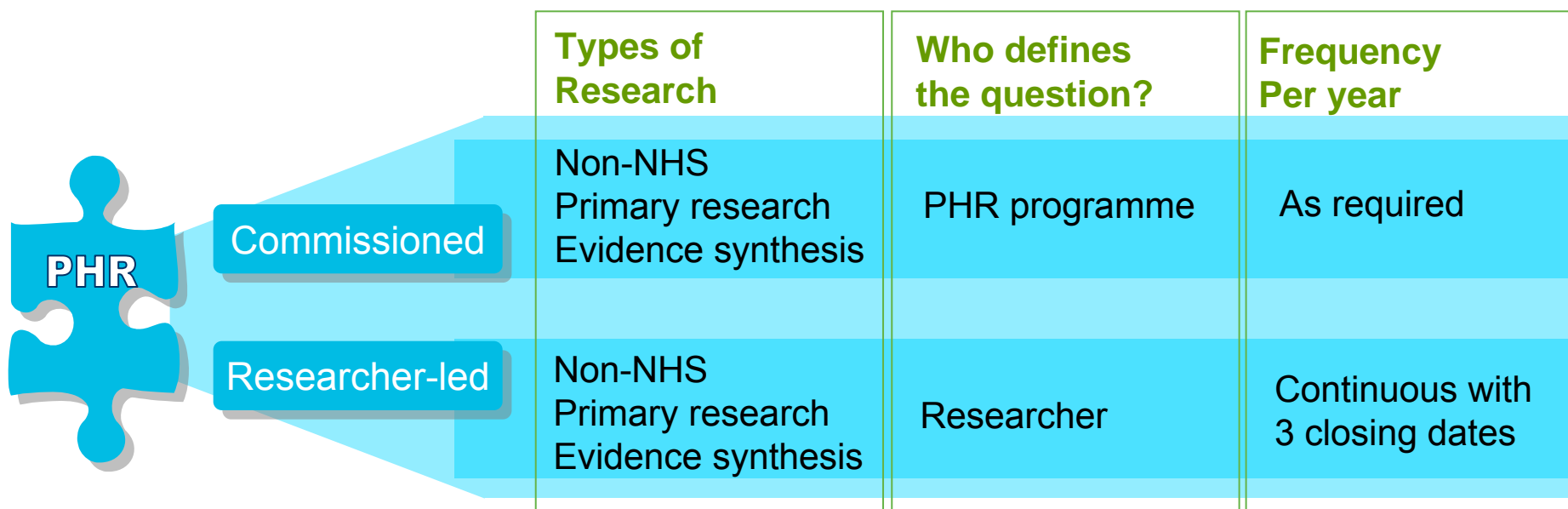
► Contact PHR

For more information and to apply for funding visit

www.phr.nihr.ac.uk

PHR programme funding opportunities

- ▶ The predicted annual budget is £10m by 2011/12
- ▶ The PHR Programme offers 2 funding workstreams: Commissioned and Researcher-led



	Types of Research	Who defines the question?	Frequency Per year
Commissioned	Non-NHS Primary research Evidence synthesis	PHR programme	As required
Researcher-led	Non-NHS Primary research Evidence synthesis	Researcher	Continuous with 3 closing dates

PHR programme highlights

Researcher-led:

- ▶ Three calls have closed since the launch of the programme. 81 outline proposals have been received, of which 59 were in remit
Next call closes 10 May 2010 (by 1pm)
- ▶ Proposals funded
 - In 2009 a total of 7 full proposals were recommended for funding
 - In February 2010 2 full proposals were recommended for funding
 - In June 2010 a further 7 full proposals will be considered

Themed call

- ▶ Obesity joint themed call with HTA programme closed on 20th January. 31 outline proposals were received of which 24 were in remit. 2 were transferred from HTA
- ▶ 26 outlines will be assessed on 3rd March 2010

Commissioned:

- ▶ Launched July 2009. 5 outline proposals were received in response to 2 topics advertised.
- ▶ Three topics are currently open for application *closing date 14th April 2010 (by 1pm)*
- ▶ Online research suggestions facility: www.phr.nihr.ac.uk/suggest

NIHR Service Delivery and Organisation Programme

▶ **Purpose and Remit**

Produces research about the organisation and delivery of healthcare for NHS commissioners, providers of health care, partner organisations such as local authorities and the voluntary sector, and for user of health care.

▶ **History**

The SDO programme was established in 1999 and joined NETSCC in April 2009.

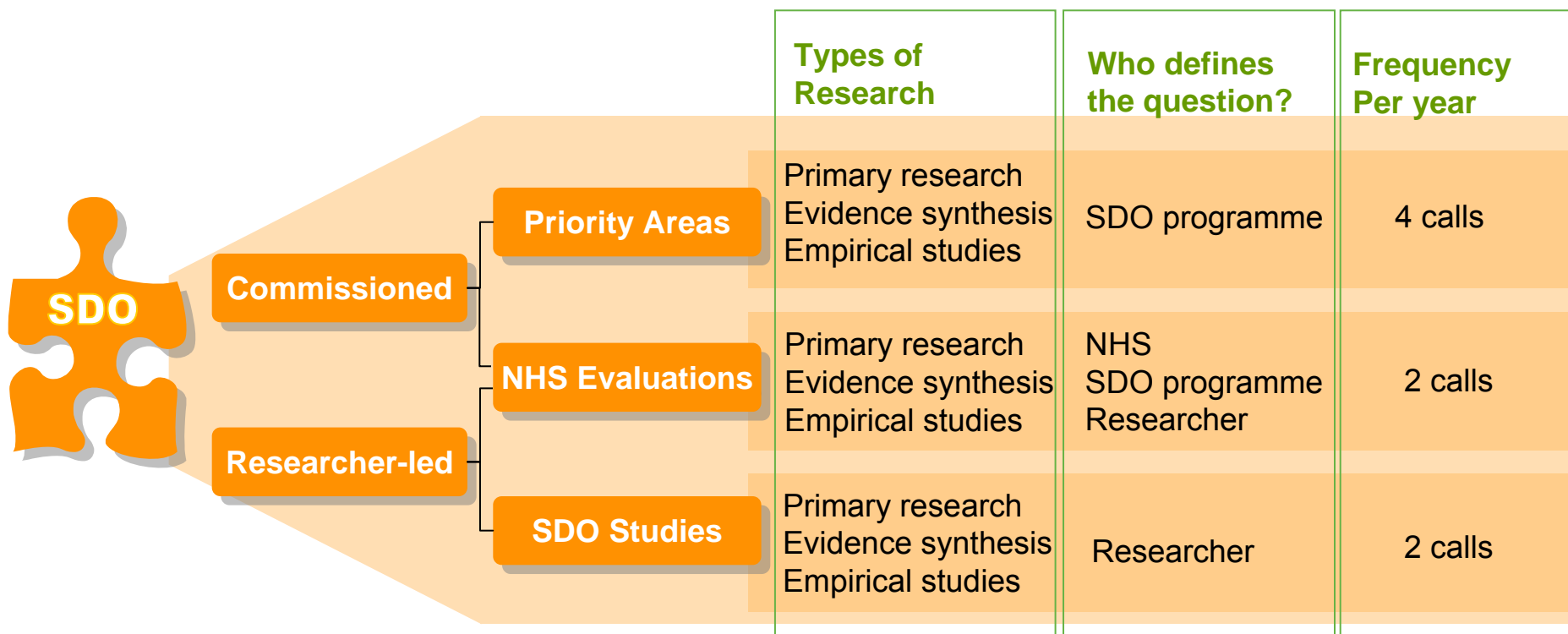
▶ **Contact SDO**

For more information and to apply for funding visit

www.sdo.nihr.ac.uk

SDO programme funding opportunities

- ▶ The predicted annual budget will rise to £11m by 2011/12
- ▶ The SDO programme operates commissioned and researcher-led funding streams through the Priority Areas, NHS Evaluations, and SDO Studies panels.



SDO programme highlights

▶ SDO Portfolio

- ▶ The current portfolio includes 110 active and 119 completed projects
- ▶ Three panels have been established:
 - ▶ The Priority Areas panel
 - ▶ The SDO Studies panel
 - ▶ The NHS Evaluations panel

▶ Calls

- ▶ Second SDO Studies Panel *a researcher-led call closing 18th March*
- ▶ Priority Areas Panel call on Patient Safety in healthcare organisations *closing 24th March*
- ▶ An evaluations panel call will run from the *15th April 2010*



Further Information

- ▶ For general information on NETSCC and our work
 - ▶ email info@netscc.ac.uk or visit www.netscc.ac.uk

- ▶ EME - Efficacy and Mechanism Evaluation programme
 - ▶ Email info@eme.ac.uk or visit www.eme.ac.uk

- ▶ HSR - NIHR Health Services Research programme
 - ▶ email hsr@southampton.ac.uk or visit www.hsr.nihr.ac.uk

- ▶ HTA - NIHR Health Technology Assessment programme
 - ▶ email hta@hta.ac.uk or visit www.hta.ac.uk

- ▶ PHR - NIHR Public Health Research programme
 - ▶ email info@phr.ac.uk or visit www.phr.nihr.ac.uk

- ▶ SDO - NIHR Service Delivery and Organisation programme
 - ▶ email sdo@southampton.ac.uk or visit www.sdo.nihr.ac.uk

■ ■ ■ ■ ■ ■
NIHR Evaluation, Trials and Studies Coordinating Centre

Thank you



UNIVERSITY OF
Southampton



