

NIHR Evaluation, Trials and Studies Coordinating Centre

NETS programmes

Ruairidh Milne, NETSCC

Joint Health Research Conference
Liverpool, 16th Oct 2009



Managing evaluation
research on behalf of
the National Institute
for Health Research

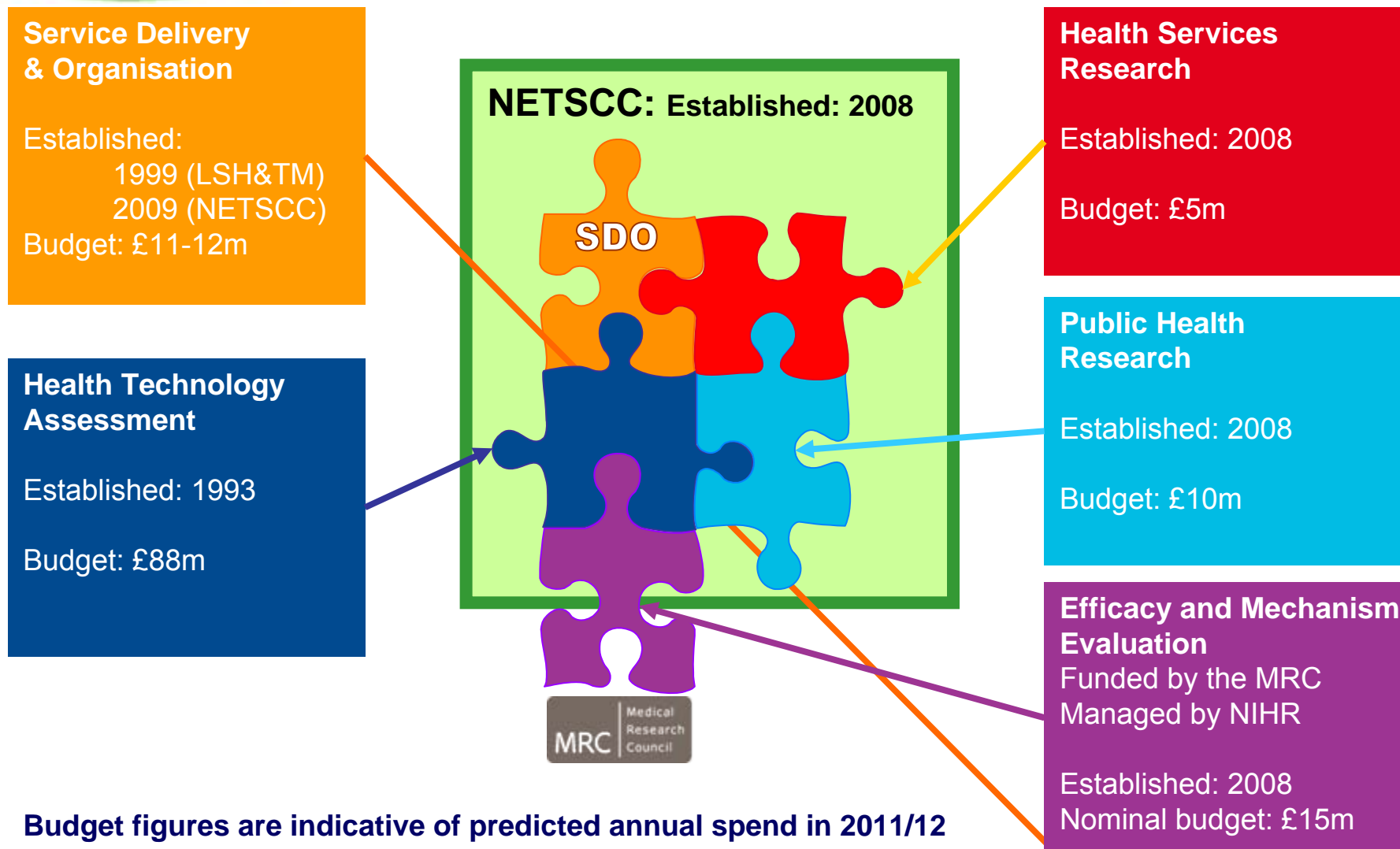


NIHR Evaluation, Trials and Studies Coordinating Centre

Context

- ▶ Government funds health research through 2 main routes: the MRC and NIHR
- ▶ In general – MRC funds earlier phase research; the NIHR funds later, more applied research
- ▶ NIHR and MRC form a continuum that supports translational research from initial concept through to clinical use
- ▶ NETSCC
 - ▶ established at the Univ of Southampton in April 2008
 - ▶ incorporates the National Coordinating Centre for Health Technology Assessment (1996)
 - ▶ funded by NIHR to manage NETS programmes

NIHR Evaluation, Trials and Studies (NETS) programmes



Budget figures are indicative of predicted annual spend in 2011/12

Funding workstreams: commissioned and researcher-led

▶ Commissioned

- ▶ Start with information needs of decision makers typically within the NHS
- ▶ Topics are refined and prioritised by people with expertise in the field
- ▶ Commissioning briefs are advertised
- ▶ Applications assessed for compliance with the brief; and also scientific quality, feasibility and value for money.

▶ Researcher-led

- ▶ Open calls for researchers to apply for funding for their own topics and questions.
- ▶ Applications are prioritised in terms of NHS or other information need in a process similar to that in the commissioned workstreams.
- ▶ Applications are then assessed for scientific quality, feasibility and value for money.

Efficacy and Mechanism Evaluation (EME) programme

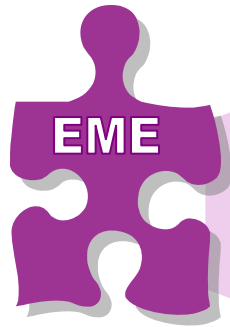
- ▶ EME is funded by MRC and managed by NIHR.
- ▶ EME was launched in April 2008 and has a nominal annual budget of £15m.
- ▶ For more information and to apply for funding go to www.eme.ac.uk
- ▶ EME is aimed at supporting 'science driven' studies with an expectation of substantial health gain.
- ▶ evaluates clinical efficacy, where proof of concept in humans has already been achieved and may also include 'mechanistic evaluation'
- ▶ works seamlessly with and sits between MRC and HTA



EME programme highlights

- ▶ Since launch April 2008, EME has received 190+ applications
- ▶ Time from application to funding decision around 8 months
- ▶ Funded EME projects include:
 - ▶ Antiglucocorticoid augmentation of antiDepressants in Depression (the ADD study)
 - ▶ A randomised controlled trial of losartan as an anti-fibrotic agent in non-alcoholic steatohepatitis
 - ▶ Neural and biomechanical correlates of response to the use of an ankle-foot cast provided to improve walking recovery early after stroke. A Phase I/II trial
 - ▶ Renal protection against ischaemia-reperfusion injury in transplantation

EME programme funding opportunities



Translational pull through

Researcher-led

	Types of Research	Who defines the question?	Frequency Per year
Translational pull through	Primary Research; Clinical efficacy of interventions	EME programme	As required
Researcher-led	Primary Research; Clinical efficacy of interventions	Researcher	Continuous with 3 submission deadlines

NIHR Health Services Research programme

- ▶ The HSR programme
 - ▶ was launched in Oct 2008 and issued its first call for expressions of interest in Jan 2009
 - ▶ to fund areas that are not currently funded, either due to remit or cost, by existing NIHR, DH and MRC programmes.
 - ▶ addresses dimensions of quality that are of central concern to the NHS: patient safety, patient experience and effectiveness of care
 - ▶ both primary research and evidence synthesis

For more information and to apply for funding visit

www.hsr.nihr.ac.uk

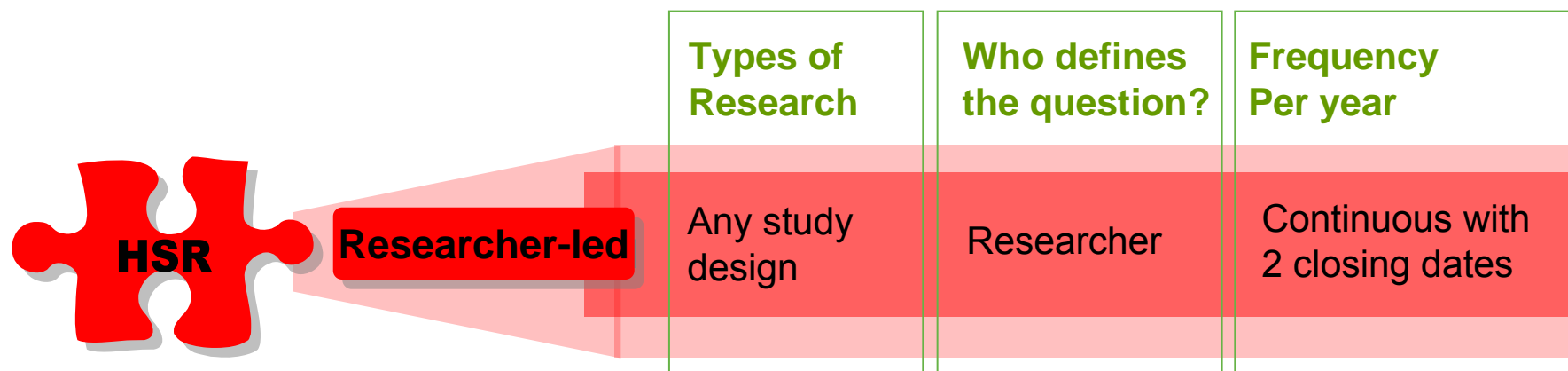


HSR programme highlights

- ▶ Predicted annual budget £5m by 2011/12
- ▶ Professor Ray Fitzpatrick, University of Oxford, was appointed programme Director from April 2009.
- ▶ Board members have been recruited
- ▶ Expect to fund first projects in early 2010

HSR programme Funding opportunities

- ▶ The HSR programme will initially offer a researcher-led funding stream with the possibility of a commissioned workstream later.



NIHR Health Technology Assessment programme

▶ **Purpose and Remit**

To deliver information about the effectiveness, costs and broader impact of healthcare treatments and tests for those who plan, provide or receive care in the NHS.

▶ **Research**

Primary research (incl pilot and feasibility studies)

Evidence synthesis

▶ ***Health Technology Assessment***: 2008 impact factor places it in the top 10% of medical & health related journals

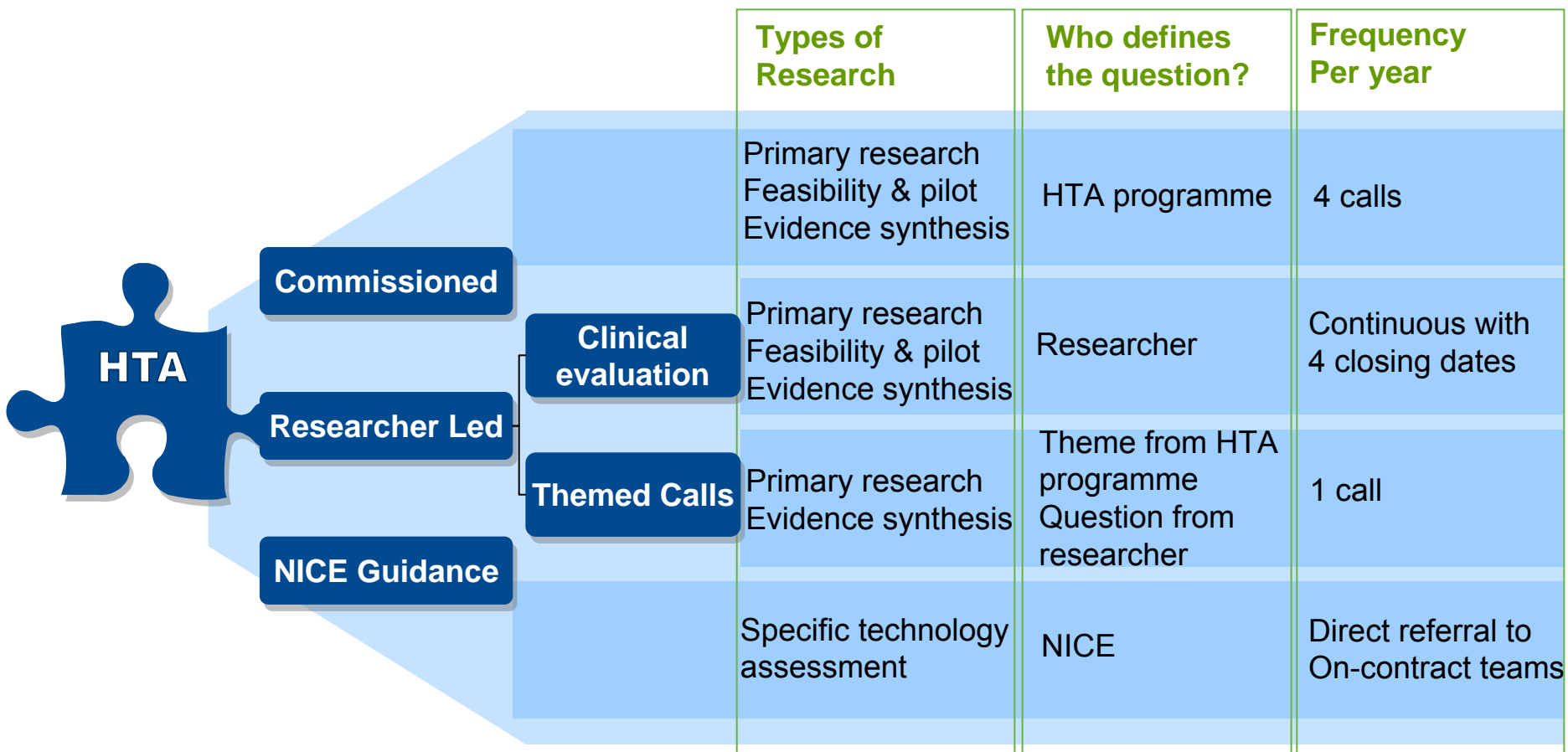
▶ For more information visit www.hta.ac.uk

HTA programme highlights

- ▶ HTA programme has invested over £280m in more than 800 projects
- ▶ Sample size of a HTA randomised control trial:
 - ▶ Median of the number of patients involved in each trial = 750
 - ▶ Range up to 100,000 across current live projects
- ▶ NICE Technology Assessment Reports
 - ▶ To date (March 2009) 135 multiple technology appraisals and 39 single technology appraisals have been completed
- ▶ Papers published in journals over the past 5 years include:
 - ▶ BMJ – 41
 - ▶ The Lancet – 14
 - ▶ New England Journal of Medicine - 3
 - ▶ Annals of Internal Medicine - 3

HTA funding opportunities

- ▶ The predicted annual budget by 2011/12 is £88m
- ▶ The HTA programme offers 3 funding workstreams:



NIHR Public Health Research programme

▶ Purpose and Remit

The PHR programme evaluates public health interventions, providing new knowledge on the benefits, costs, acceptability and wider impacts of **non-NHS** interventions intended to improve the health of the public and reduce inequalities in health.

The scope of the programme is multi-disciplinary and broad covering a range of public health interventions.

▶ History

The PHR programme was launched in Autumn 2008.

▶ For more information and to apply for funding visit

www.phr.nihr.ac.uk

PHR programme highlights

Researcher-led:

- ▶ 87 proposals received to date
Next close 11 Jan 2010
- ▶ Obesity joint themed call with HTA launching 20 Nov 2009 –
next close *20 Jan 2010*

Commissioned:

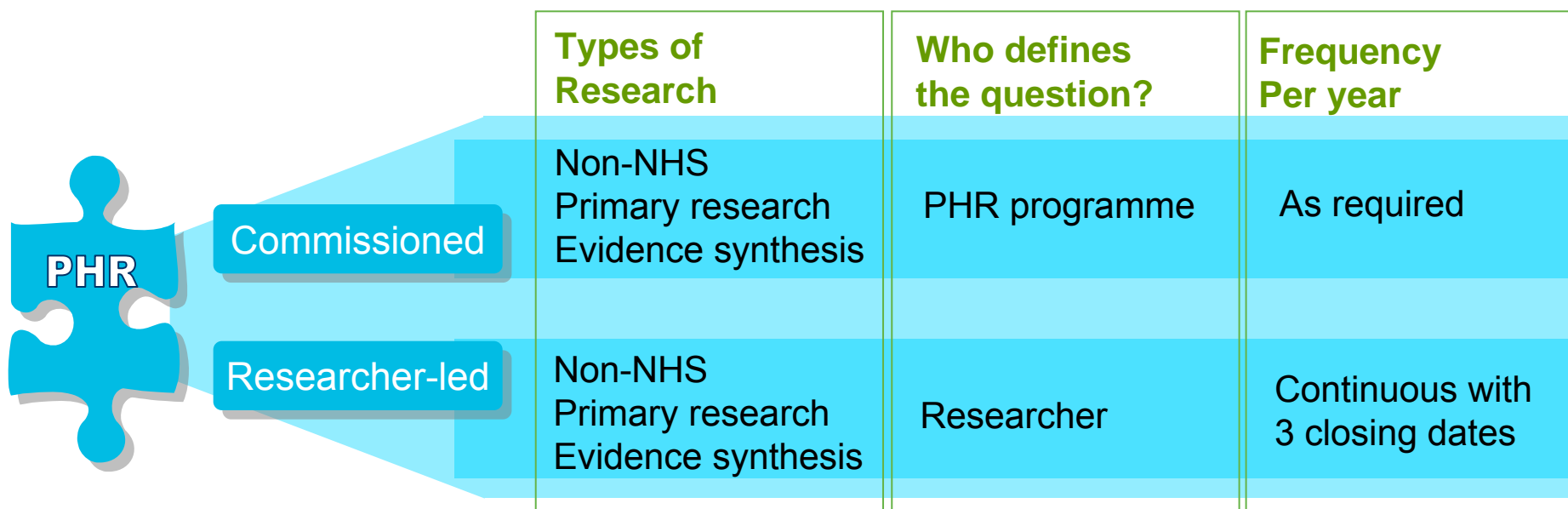
- ▶ Launched July 2009. Two topics advertised – call closed September 2009.
- ▶ Programme Advisory Board in Nov 2009 to prioritise topics for next call – opening in Dec 2009.
- ▶ Online research suggestions:
www.phr.nihr.ac.uk/suggest

▶ Funded projects

- ▶ Reducing alcohol-related harm in disadvantaged men: development and feasibility assessment of a brief intervention delivered by mobile phone
- ▶ Health impacts of the Cambridgeshire Guided Busway
- ▶ Does the RHS Campaign for School Gardening increase intake of fruit and vegetables in children?

PHR programme funding opportunities

- ▶ The predicted annual budget is £10m by 2011/12
- ▶ 2 funding workstreams: Commissioned and Researcher-led



	Types of Research	Who defines the question?	Frequency Per year
Commissioned	Non-NHS Primary research Evidence synthesis	PHR programme	As required
Researcher-led	Non-NHS Primary research Evidence synthesis	Researcher	Continuous with 3 closing dates

NIHR Service Delivery and Organisation Programme

▶ **Purpose and Remit**

Produces research about the organisation and delivery of healthcare for NHS commissioners, providers of health care, partner organisations such as local authorities and the voluntary sector, and for user of health care.

▶ **History**

The SDO programme was established in 1999 and joined NETSCC in April 2009.

▶ **Contact SDO**

For more information visit www.sdo.nihr.ac.uk



SDO programme highlights

▶ SDO Portfolio

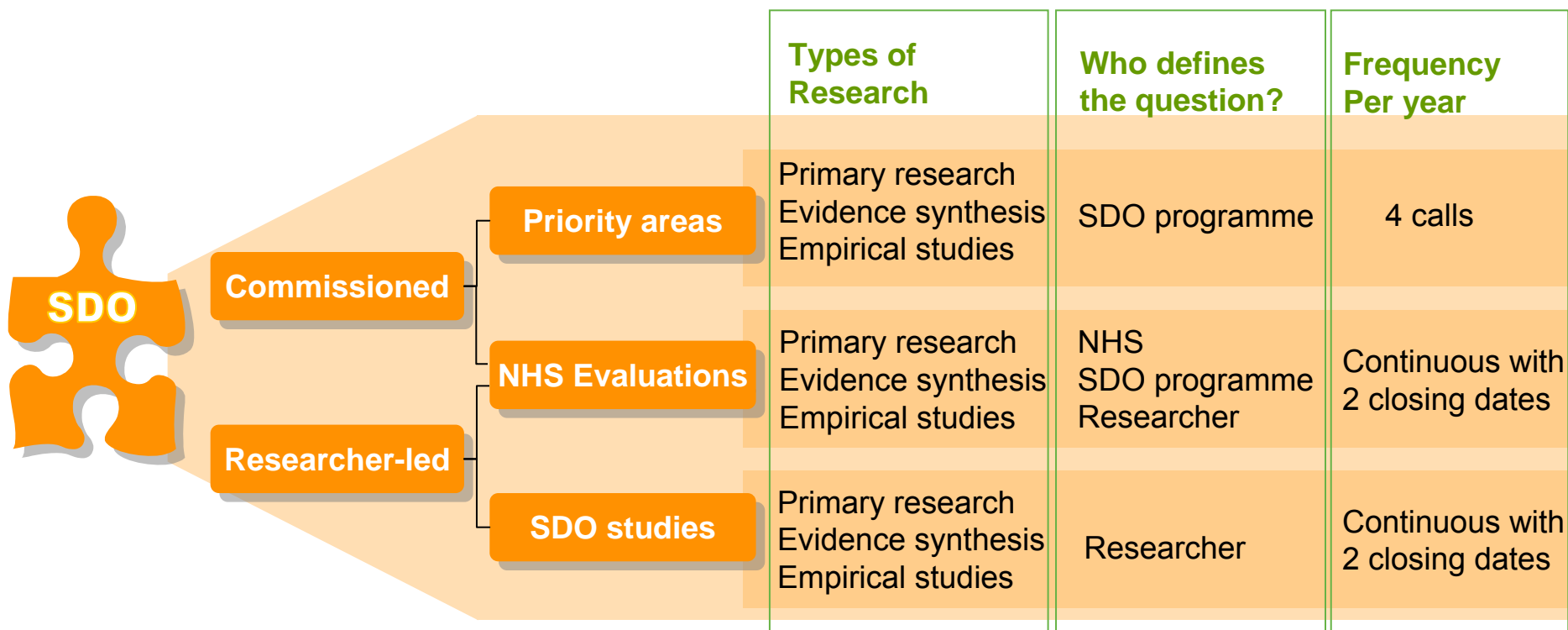
- ▶ The current portfolio includes 122 active and 112 completed projects
- ▶ Three panels have been established:
 - ▶ The Priority Areas panel
 - ▶ The SDO Studies panel
 - ▶ NHS Evaluations panel

▶ Calls

- ▶ First SDO Studies Panel
- ▶ First NHS Evaluations Panel
- ▶ Priority Areas Panel call on Knowledge Mobilisation and Capacity Building

SDO programme funding opportunities

- ▶ The predicted annual budget is between £11m and £12m by 2011/12
- ▶ The SDO programme operates commissioned and researcher-led funding streams through the Priority Areas, NHS Evaluations, and SDO Studies panels.





Thank you

www.netscc.ac.uk



UNIVERSITY OF
Southampton





NIHR Evaluation, Trials and Studies Coordinating Centre



UNIVERSITY OF
Southampton



Feasibility and pilot studies

- ▶ **Other definitions are used elsewhere but we apply the following in order to help us communicate with applicants.**
- ▶ **Feasibility study**
 - ▶ Pieces of research done before a main trial
 - ▶ Used to estimate important parameters that are needed to design the main study.
 - ▶ Feasibility studies for randomised controlled trials may not themselves be randomised.
 - ▶ They do not evaluate the outcome of interest; that is left to the main trial
- ▶ **Pilot study**
 - ▶ Pilot studies are a small scale versions of the main study that run to test whether the components of the main study can all work together.
 - ▶ Focused on the processes of the main trial, for example recruitment, randomisation, treatment, and follow-up assessments.
 - ▶ An **internal pilot** is a pilot that may be the first phase of the substantive trial and data from the pilot phase may contribute to the final analysis
 - ▶ An **external pilot** is one where the data may be analysed but set aside in respect of the substantive trial.

Managing evaluation research programmes on behalf of NIHR

- ▶ **NIHR Evaluation, Trials and Studies (NETS) programmes**
 - ▶ Efficacy and Mechanism Evaluation programme
 - ▶ NIHR Health Services Research programme
 - ▶ NIHR Health Technology Assessment programme
 - ▶ NIHR Public Health Research programme
 - ▶ NIHR Service Delivery and Organisation programme

- ▶ **Management of prime funding for UKCRC registered Clinical Trials Units**
 - ▶ Stable funding opportunity to enable CTUs, conducting clinical evaluations and trials for NETS programmes, to support and strengthen research capacity
 - ▶ Intended to produce an increase in the number of high quality research applications submitted to NETS programmes
 - ▶ Eighteen units awarded funding to date with an initial 3 year contract



Full and appropriate funding

- ▶ **No ceiling on amount or duration of funding – what is needed to answer the question in an efficient way**
- ▶ **University based projects: we fund up to 80% of the Full Economic Cost (FEC)**
- ▶ **NHS Trust based projects: we fund 100% of the direct costs**
- ▶ **Other organisations are also welcome to apply**