

# Working with the Life Sciences Industry

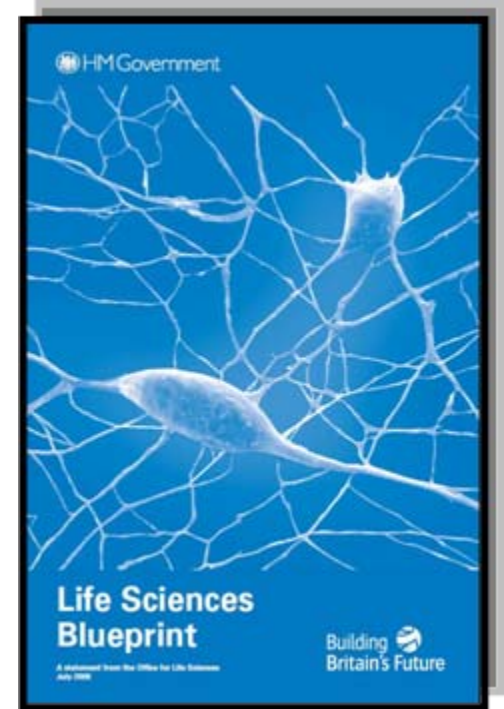
## How NIHR and Regional Activities are supporting SMEs

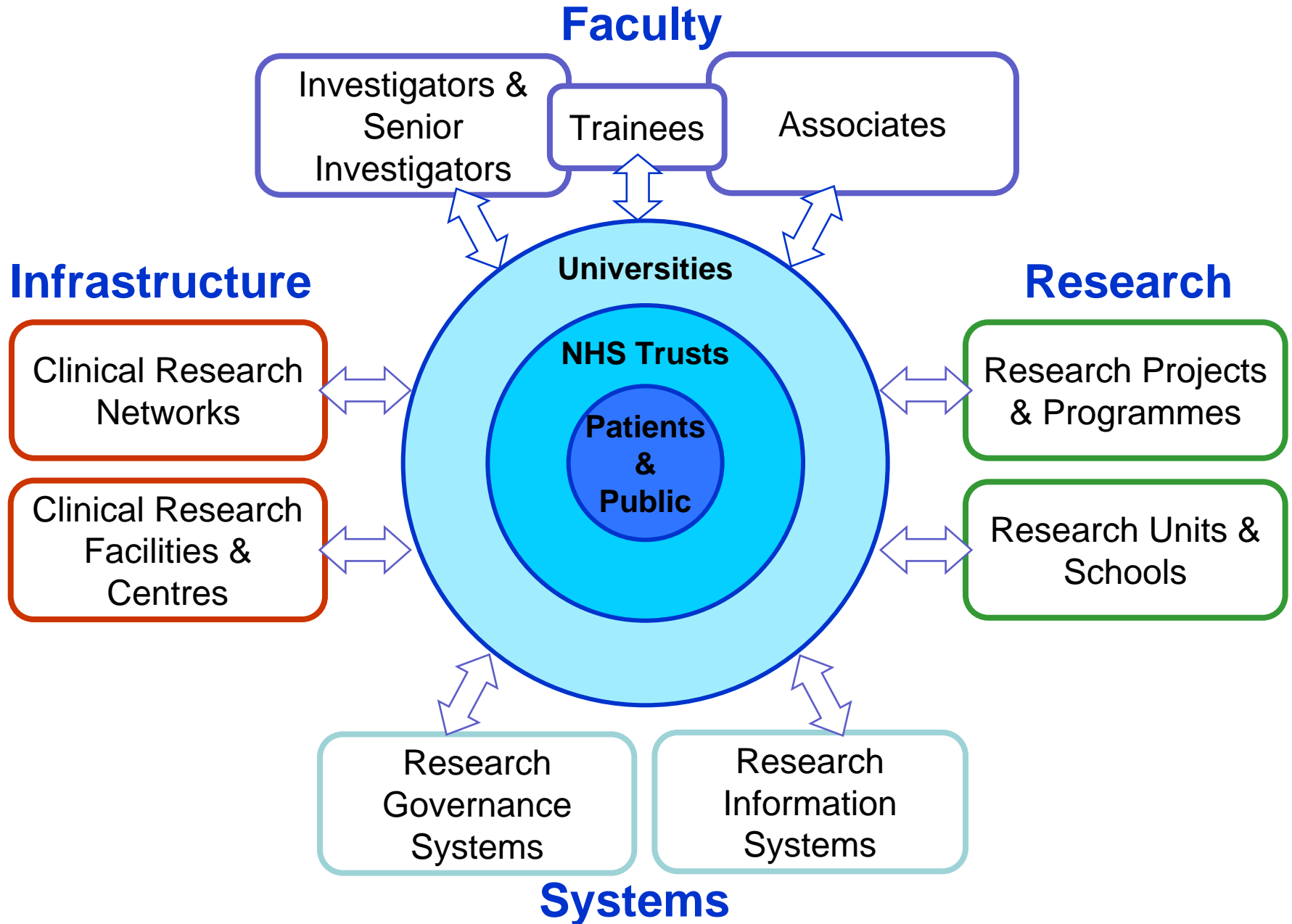
23 November 2009



Peter Houghton – SHA  
Jill Dhell - DH  
Dr David Parry – SEHTA

# National Policy Environment

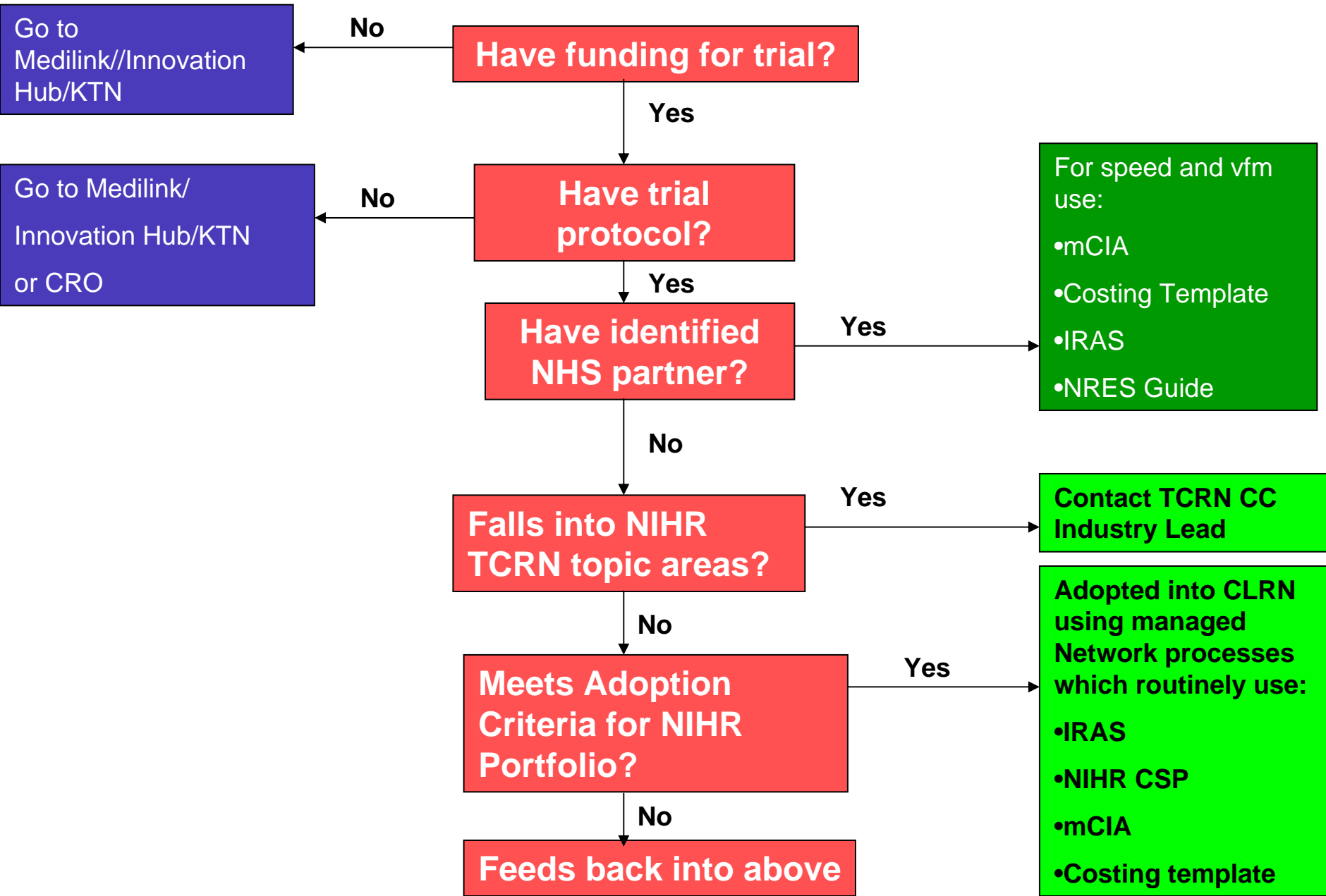




## Infrastructure

### Clinical Research Networks

- *8 med tech clinical research studies adopted by the Network; discussions with more companies*
- *NIHR CRN Working with Industry National Event 04/06/09*
- *ABHI/NIHR/KTN/BIS Med Tech Industry Stakeholder Event 12/10/09*
- *NIHR Med Dev Clin Res WG*
- *NIHR Med Tech Process Testing WG*



- **Invention for Innovation**
  - Future Product Development streams 1-3
  - SBRI
- **Research for Patient Benefit**
  - Response-mode projects
- **Evaluations & Trials**
  - HTA commissioned projects
  - HTA commissioned systematic reviews
  - Response-mode trials
- **Service Delivery & Organisation**
  - Commissioned & responsive projects

## Research

Research Projects  
& Programmes

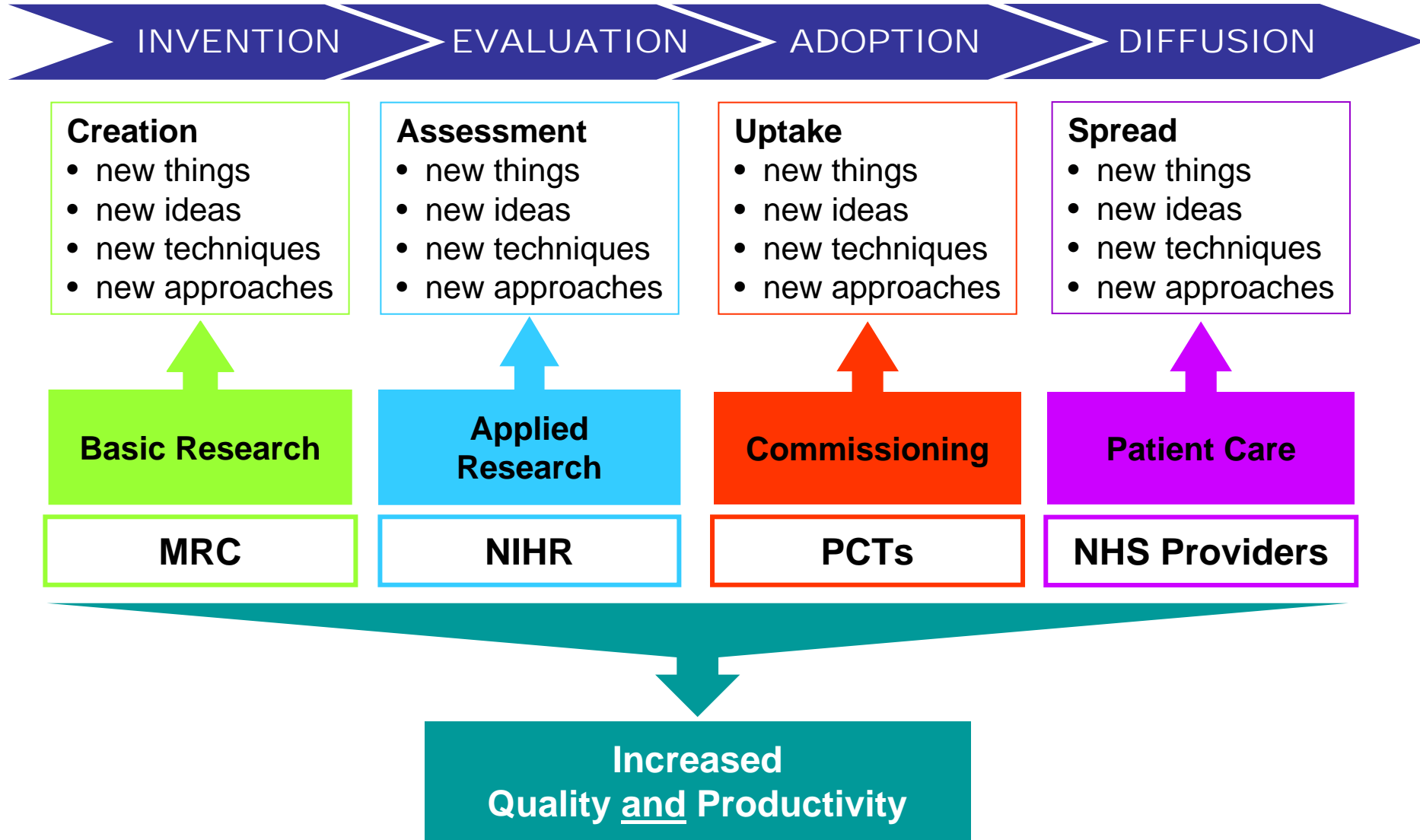
- **Integrated Research Application System (IRAS)**
- **NIHR Coordinated system** for gaining NHS permission
- **National Research Ethics Service**
- **Research Passports**
- **Model Clinical Trials Agreements**
- **Costing Template**
- Research governance and management as an integral part of the NIHR **Clinical Research Network**

Research  
Governance  
Systems

Research  
Information  
Systems

**Systems**

# The Innovation Pathway



INVENTION

EVALUATION

ADOPTION

DIFFUSION

National Institute for Health Research

Basic Research

Development Pathway Funding

MRC

Efficacy & Mechanism Evaluation

Invention for Innovation

Biomedical Research Centres

Biomedical Research Units

Patient Safety and Quality Research Centres

Research for Innovation, Speculation & Creativity

Research for Patient Benefit

Health Services Research

Programme Grants for Applied Research

Public Health Research

Service Delivery & Organisation

Health Technology Assessment

Collabs for Ldrshp in Appl Hlth Res and Care

Ctr for Reviews & Dissemination, Cochrane, TARs

NHS Purchasing & Supplies Agency Centre for Evidence-based Purchasing

National Institute for Health & Clinical Excellence Guidance on Health & Healthcare

NHS Evidence Access to Evidence

NHS Institute for Innovation & Improvement Support for the NHS

Strategic Health Authorities Duty of Innovation

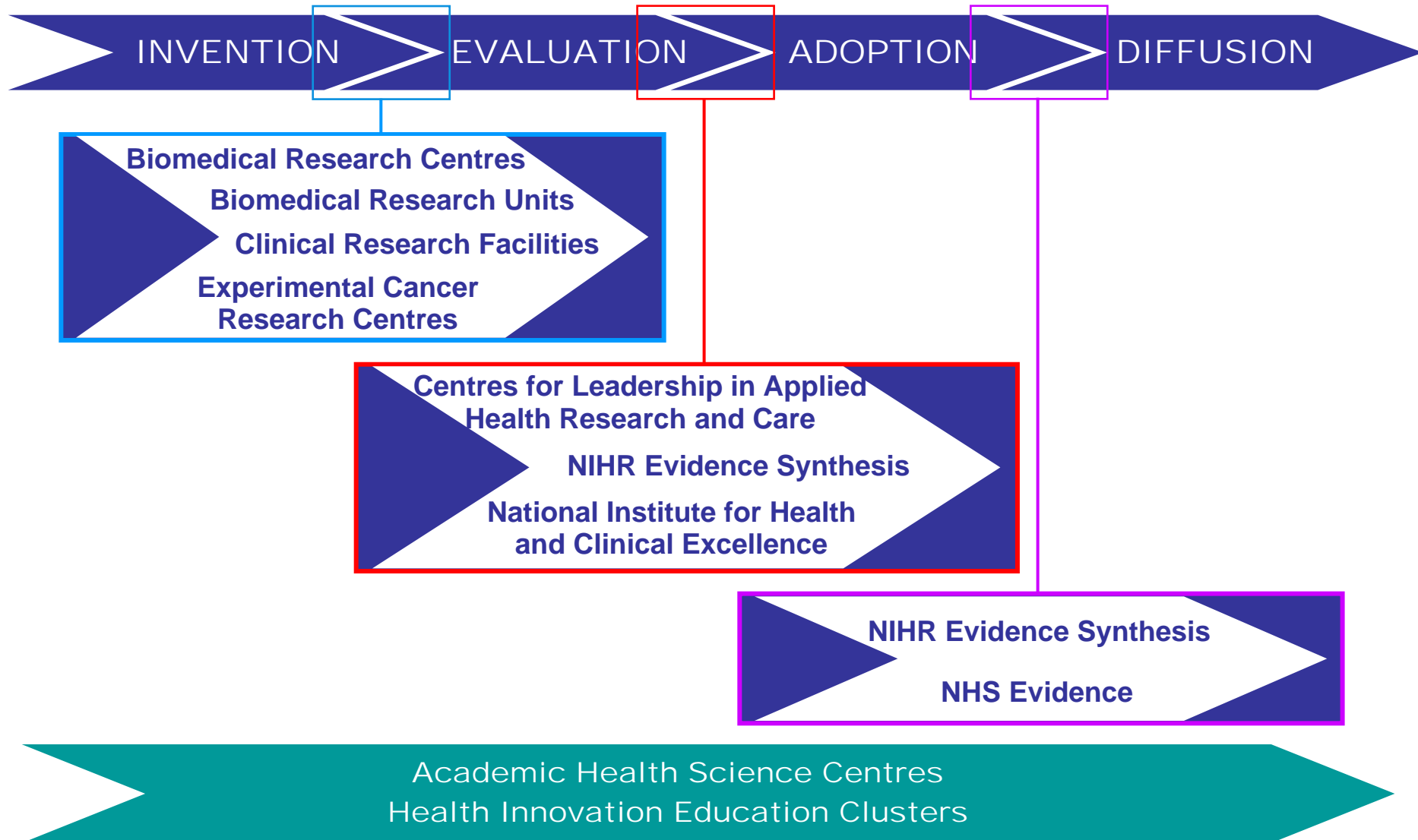
Primary Care Trusts Healthcare Commissioning

NHS Providers Patient Care

National Institute for Health Research

This pathway covers the full range of interventions - pharmaceuticals, biologicals, biotechnologies, procedures, therapies and practices - for the full range of health and health care delivery - prevention, detection, diagnosis, prognosis, treatment, care.

# National and local approaches to speed up translation



**[Jill.Dhell@dh.gsi.gov.uk](mailto:Jill.Dhell@dh.gsi.gov.uk)**

Innovation & Industry R&D Relations Manager

