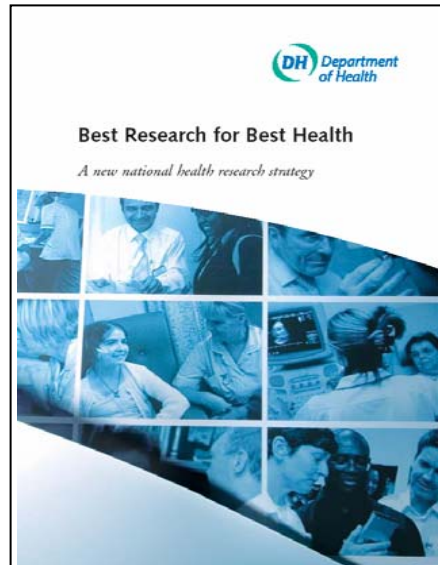


The Primary Care Research Network (South West): working across the networks

Philip Evans
Director

Our *raison d'être*



- **“Strengthening the evidence base for prevention, diagnosis, treatment and management of illness and disease in primary care.”**
- **“To increase the number of patients recruited or involved in clinical trials and other well designed primary care studies.”**

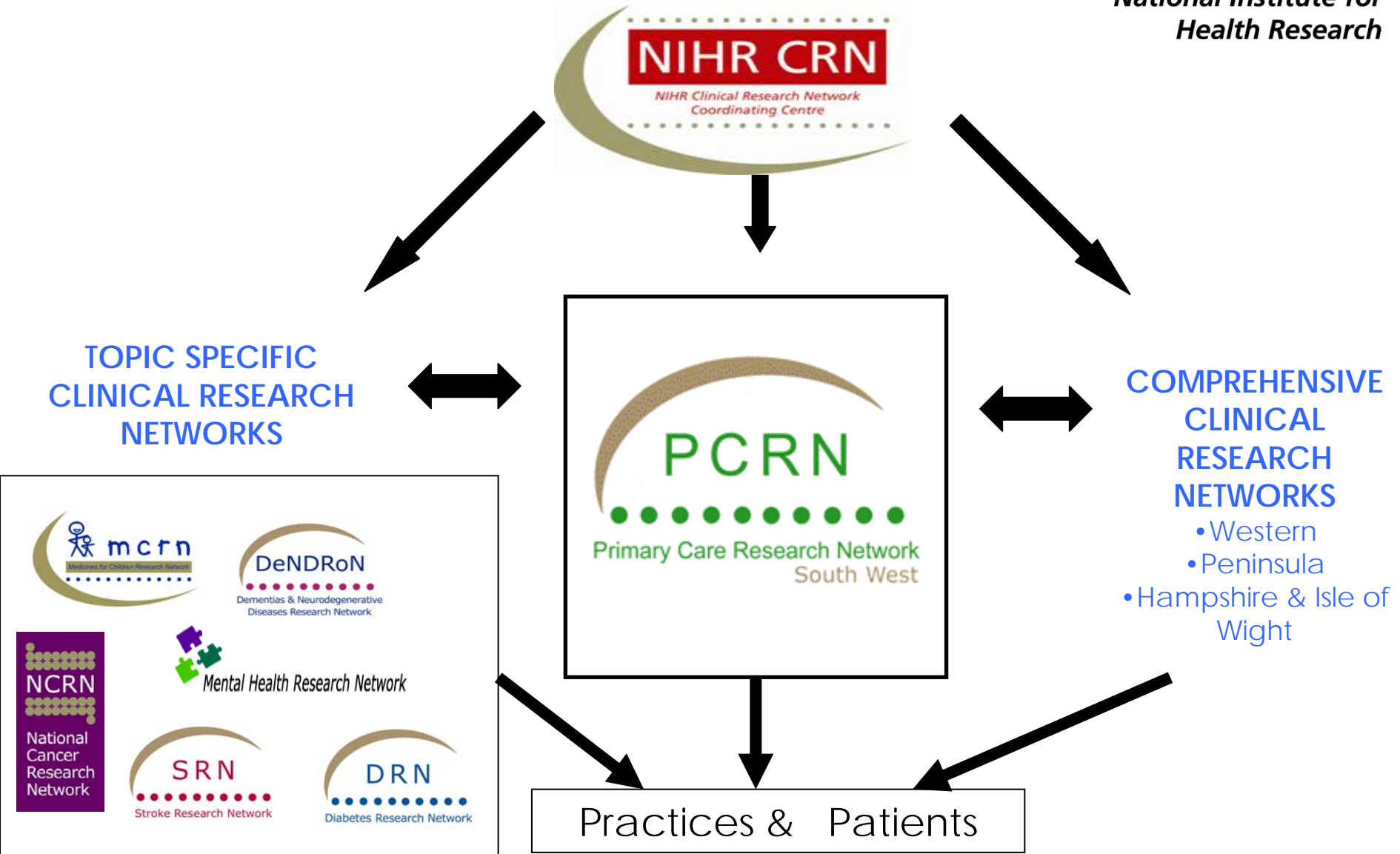
PCRN accruals nationally

Research Network	Total Number of Studies Open or In Set Up	Total Number of Studies Reporting Accrual, 2008/09 (April 08 to date)	Total Accrual, 2008/09 (April 08 to date)
National Cancer Research Network (NCRN)	366	343	30629
Dementias and Neurodegenerative Diseases Research Network (DeNDRoN)	85	79	6354
Diabetes Research Network (DRN)	133	104	29440
Medicines for Children Research Network (MCRN)	66	58	4361
Mental Health Research Network (MHRN)	227	130	13761
Stroke Research Network (SRN)	69	61	7614
Primary Care Research Network (PCRN)	141	176	105794
Comprehensive Clinical Research Network (CCRN)	1041	794	153171
TOTAL	2128	1745	351124

Figures from Wednesday 15 April 2009



The network "family"



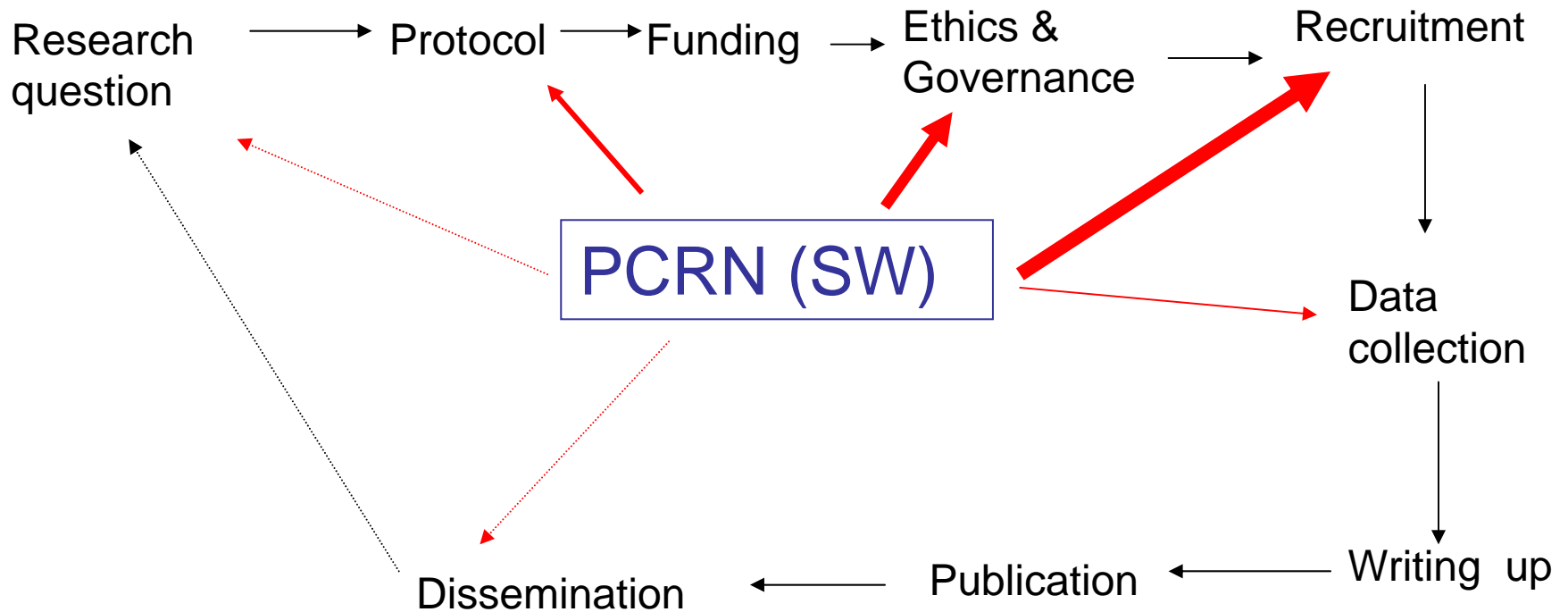
PCRN (SW)

We support research studies:-

- General Practices
- Community Hospitals
- Optometrists
- Dentists
- Pharmacists



The role of PCRN(SW) in Research = Delivery



Setting

- Large geographical area
- South West SHA *plus* some of South Central SHA
- 6.7 million population -13.6 % of English population
- 18 PCTs and 4973 GPs
- 1018 practices
- Wide range of practice settings-urban/rural/deprived
- Population stability

The PCRN Portfolio

- Trials and other high quality studies
- 233 on PCRN national portfolio
- 35 studies on PCRN(SW) portfolio
- A mix of :
 - Non –commercial (33) & industry (2)
 - Interventional (19) & observational (12) and both (4)
 - “Home-grown” (17) & Up the line !” (18)



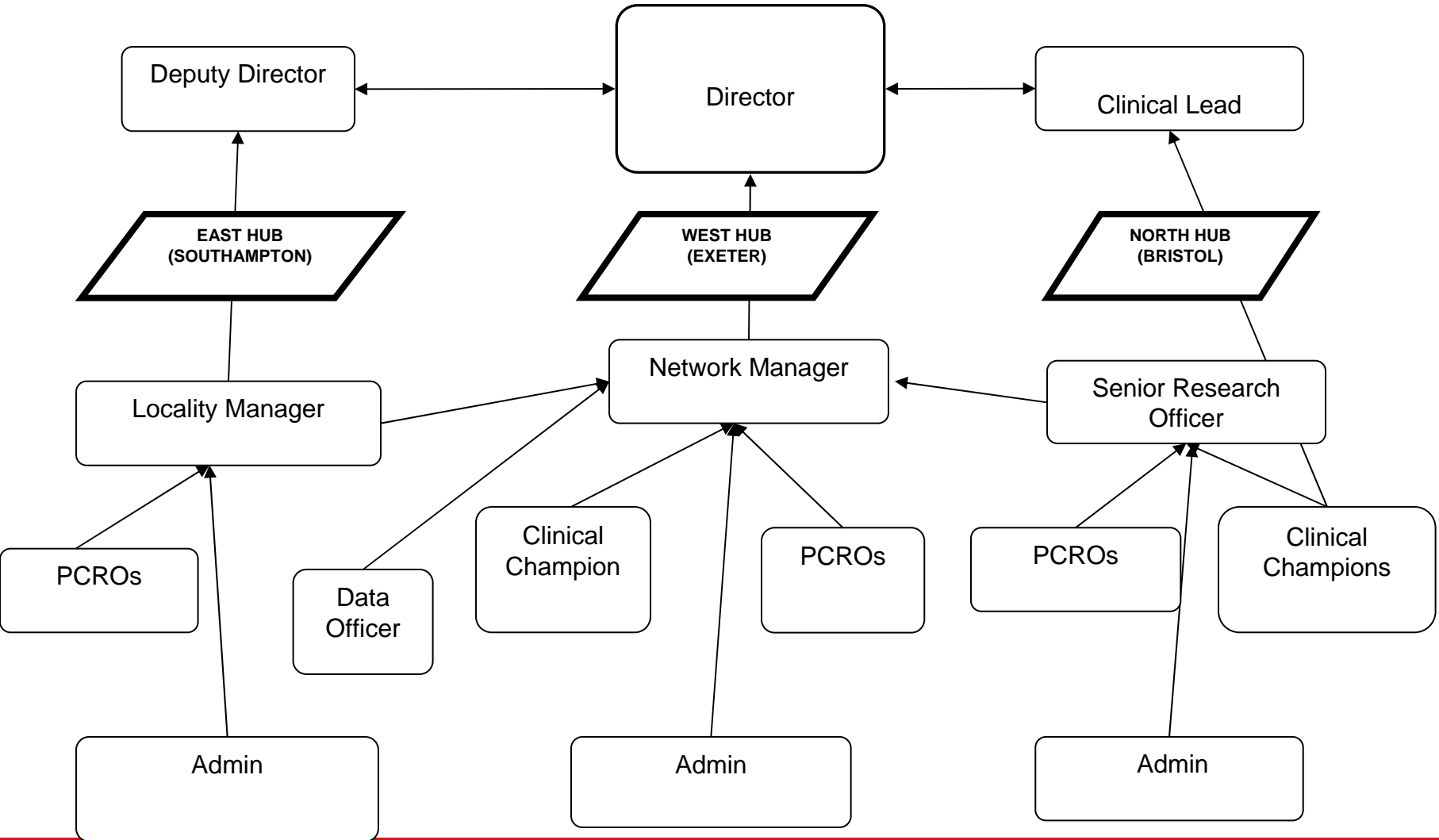
PCRN(SW) supporting research in primary care

- Staff
- Infrastructure in practices
- Training
- Knowledge
- Co-ordination and collaboration

Staff

- 3 centres (hubs) – locality based – 23 staff
- Clinical Lead (GP) in each hub
- Network Manager, Locality manager and Senior Research Officer (RO)
- ROs and Clinical Champions (GPs x4)
- Administrative support in each hub
- Numerous shared posts across TCRNs and CLRNs e.g. MCRN, MHRN, Stroke
- Excellent links with primary care and other university departments (with an academic professorial lead in each hub)

ORGANISATIONAL CHART OF THE PRIMARY CARE RESEARCH NETWORK (SOUTH WEST)



Infrastructure support to practices

- The PCRN portfolio - promotion via practice visits , newsletter, email alerts etc.
- Sessional support (CLRNs funded)
- Service Support Costs (via CLRNs)
- The Primary Care Incentive Scheme (PCIS) – CLRNs funded- agreed across our 3 CLRNs

Level 1 - £1,500 pa

- Consider studies on a regular basis
- Hold 1–2 meetings a year with the local network facilitator

Then:

- recruiting patients either by GPs or Nurses in routine consultations or in dedicated clinics
- Host up to **3** NIHR studies per year
- To consider at least one potential industry study, if requested to do so

Level 2 - £4,000 pa

As level 1 *plus*:

- 4 or more NIHR studies per year
- Undertake feasibility assessments i.e. database searches
- Maintain validated registers in the disease areas of the 'Topic Clinical Research Networks'
- Lead clinician to have Good Clinical Practice (GCP) training

Primary Care Incentive Scheme (08/09)

PCRN (SW) total practices = 1018

- **Level 1 = 129 (12.7%) of practices**
- **Level 2 = 26 (2.6%) of practices**

Total = 155 (15.2%) of practices

In 2007/8 395 (38%) of practices currently running at least one NIHR study

National target = 30% of practices (09/10)

PCRN(SW) - Primary Care Incentive Scheme 2008/9



● Level 1 Practices

● Level 2 Practices

Copyright © and (P) 1988-2005 Microsoft Corporation and/or its suppliers. All rights reserved. Portions © 1990-2005 InstallShield Software Corporation. All rights reserved. Certain mapping and direction data © 2005 NAVTEQ. All rights reserved. NAVTEQ and NAVTEQ ON BOARD are trademarks of NAVTEQ. © Crown Copyright 2005. All rights reserved. License number 100025500.

Training

- GCP (primary care) training in each of the 3 hubs
- Advice for practices regarding Research Ready
- Other NIHR courses
- Joint training with TCRNs if applicable

Knowledge

- On the ground local know-how regarding :
 - Practice size
 - Track record of practices
 - Practice interests
 - PCT issues
 - Competing studies
 - Over-researching
 - Referral patterns

= **Strategic Recruitment across PCRN(SW)**

Co-ordination & collaboration

- Inter-network appointments e.g. joint posts
- Inter-network working e.g. Network managers' meetings
- Integrated staff meetings e.g. PCRN(SW) and Peninsula DRN
- Facilitating PCT Trust approval across the region
- Shared education for research officers with other networks
- Teleconferences across network for specific projects

The PCRN(SW) portfolio

: a selection

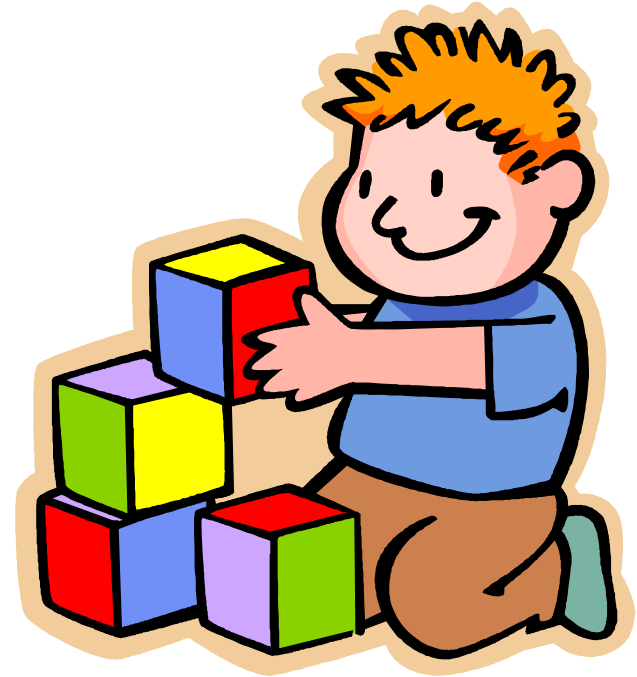
- TREAD – Exeter – Exercise and depression (with *MHRN*)
- GETuP - Group exercise in Parkinson's trial (with *DeNDRoN*)
- MASCOT - Management of asthma in children (with *MCRN*)
- ASCEND – Aspirin in patients with T2DM (with *Peninsula DRN*)
- DESCARTE- Observational study of sore throat and its complications

Building blocks in place

- Practice interest
- Practice engagement
- Practice commitment
- Realistic funding streams
- Accreditation

Challenges include:

- Engaging other primary care practitioners
- Engaging PCTs
- Keeping studies coming in through the portfolio



Thank you for listening

Relevance to Practices

- Answers clinically important questions
- Patients do better in trials
- Access to new treatments
- Help reaching QOF targets
- Distinctive edge to the practice
- Helps retention of practice staff?