

WEST MIDLANDS RESEARCH DESIGN SERVICE:

What is it and what it does

Jayne Parry

**Director of WMRDS
Professor of Policy & Public Health
University of Birmingham**

OVERVIEW

- **History and purpose**
- **What services we offer**
- **How we operate**
- **What to do next**

HISTORY AND PURPOSE OF WMRDS

- Established October 2008
- NIHR/DH initiative
- To improve the number and quality of applications to the Research for Patient Benefit and other NIHR programmes



“applications from the NHS often contain excellent ideas ... which unfortunately cannot be funded because of methodological flaws”

RESEARCH FOR PATIENT BENEFIT

- Established October 2006
- 1 OF 10 NIHR funding programmes
- Response-mode funding for applied health and social care research

“offering opportunities to research issues arising from daily practice in the NHS and to contribute to the improvement of the health and health care experience of users of the service”

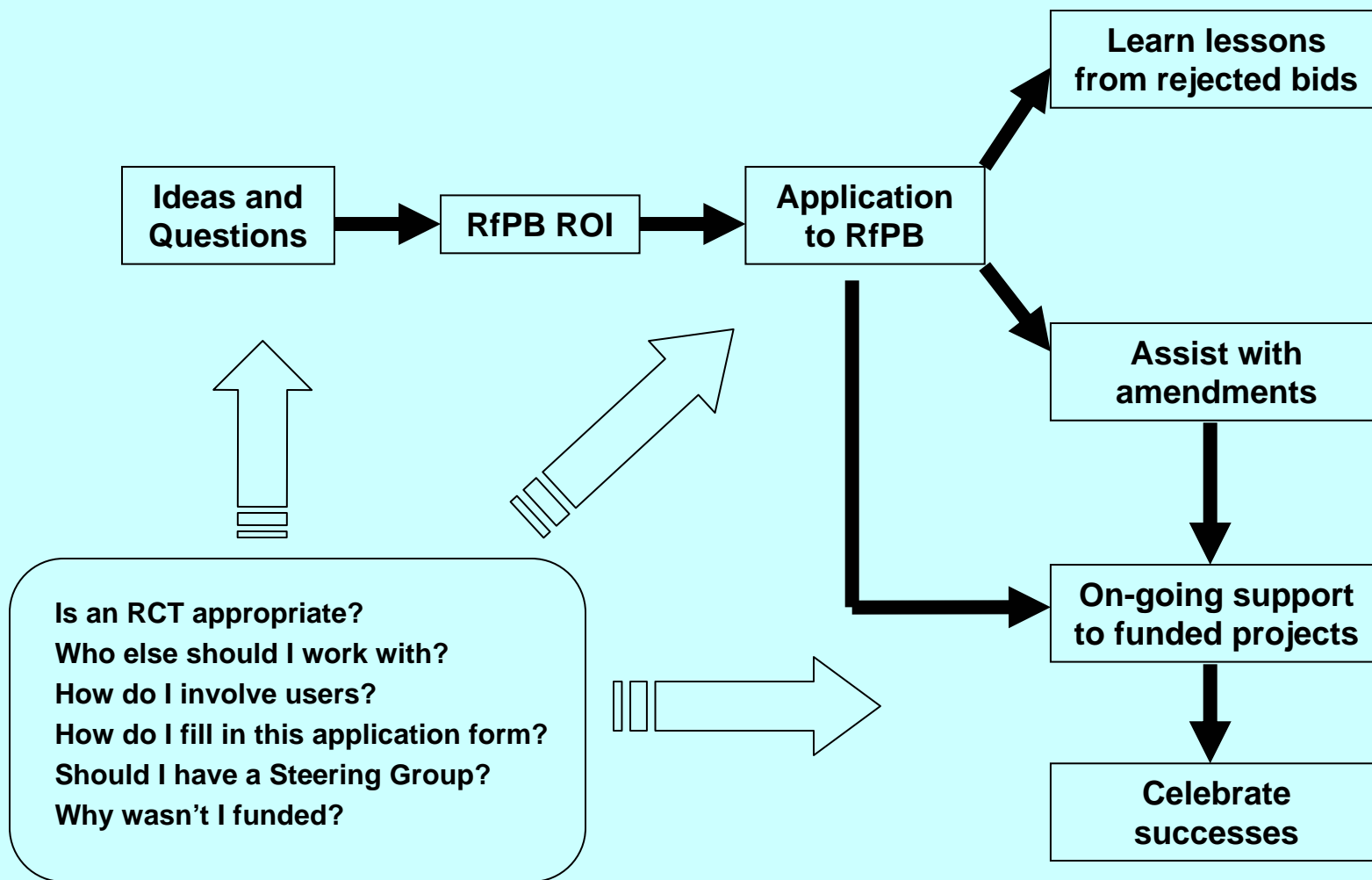
- £250K over 3 years
- Funding decisions made on a regional basis

SERVICES OFFERED

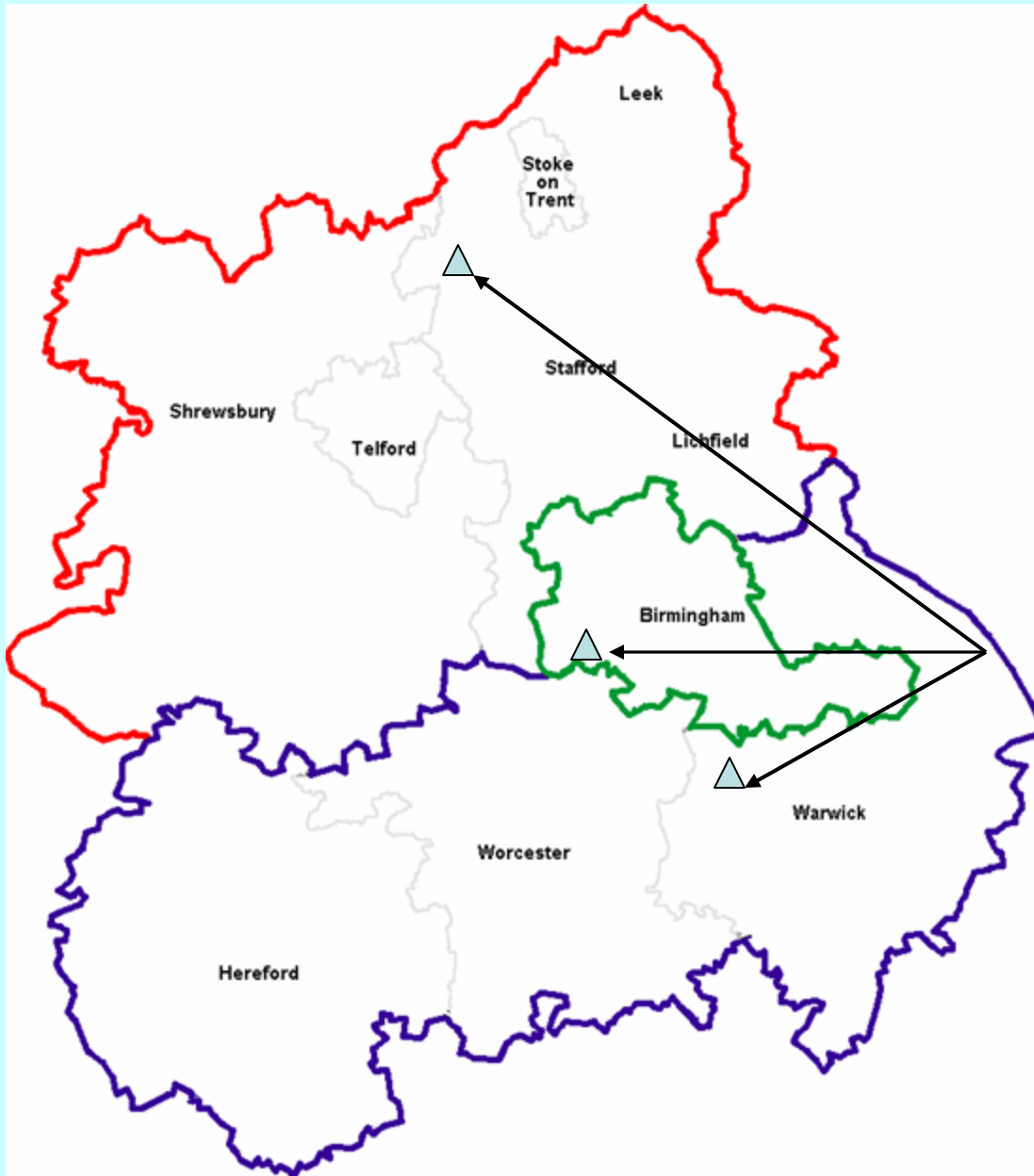
- **Study design including conduct of RCTs or other complex designs including mixed methods studies**
- **Statistics**
- **Health economics**
- **Systematic reviews and meta-analysis**
- **Qualitative methods**
- **Service evaluation**
- **Ethics and Governance**
- **Patient and Public Involvement**
- **Appropriate formation of Research Team**
- **Identification of Funding Bodies other than RfPB/NIHR**

SUPPORT MAPPED TO RfPB PROCESS

‘sequential or targeted packages of support’



HOW WMRDS OPERATES



1 CE - PCRN

3 CLRNs

- North West Midlands
- Birmingham
- West Midlands South

WM RDS

**Coordinating Office in
Birmingham (Dept PHEB)**


**Hubs in the Universities of Keele,
Birmingham, Warwick**

NIHR RDS West Midlands - Mozilla Firefox

File Edit View History Bookmarks Tools Help

http://www.rds-wm.nihr.ac.uk/web/guest/home

Most Visited Getting Started Latest Headlines eLibrary WebCT PAYG BBC Daily Mash St Pixels Pub Med Amazon Ship of Fools LFC Classic fm University of Birmingham...



NHS
National Institute for Health Research

The NIHR Research Design Service for the West Midlands

- Home
- Who are we?
- Contact Us
- Training
- News
- FAQs
- Submit a Query
- Useful Links
- Birmingham Hub
- Keele Hub
- Warwick Hub

The RDS WM is part of the infrastructure of the [National Institute for Health Research](#). It is one of ten services in England making up the national RDS.

We provide help to anyone working in the West Midlands region who has a 'good idea' and wants to turn it into a research proposal for submission to peer-reviewed funding programmes in applied health and social care.

Advice and practical support is provided free of charge and is available through research clinics, face-to-face, by telephone and email.

The RDS WM has three 'hubs' based in the Universities of [Birmingham](#), [Keele](#) and [Warwick](#). Each Hub has a team of staff with expertise in statistics, quantitative and qualitative research techniques, clinical trials, evidence synthesis, health economics, epidemiology, public & patient involvement, and ethics & governance.

Each Hub can advise on all aspects of preparing grant applications including:

Done

start | Inboxes - Microsoft Out... | NIHR RDS West Midla... | Document1 - Microsof... | 15:42



The NIHR Research Design Service for the West Midlands

[Home](#)

[Who are we?](#)

[Contact Us](#)

[Training](#)

[News](#)

[FAQs](#)

[Submit a Query](#)

[Useful Links](#)

[Birmingham Hub](#)

[Keele Hub](#)

[Warwick Hub](#)

RDS for the West Midlands - Initial Interest Template:

Please complete as much of this form as you can - the information you provide will allow us to direct your query towards the appropriate advisor, who will contact you to discuss your enquiry in greater detail.

Your details (*)

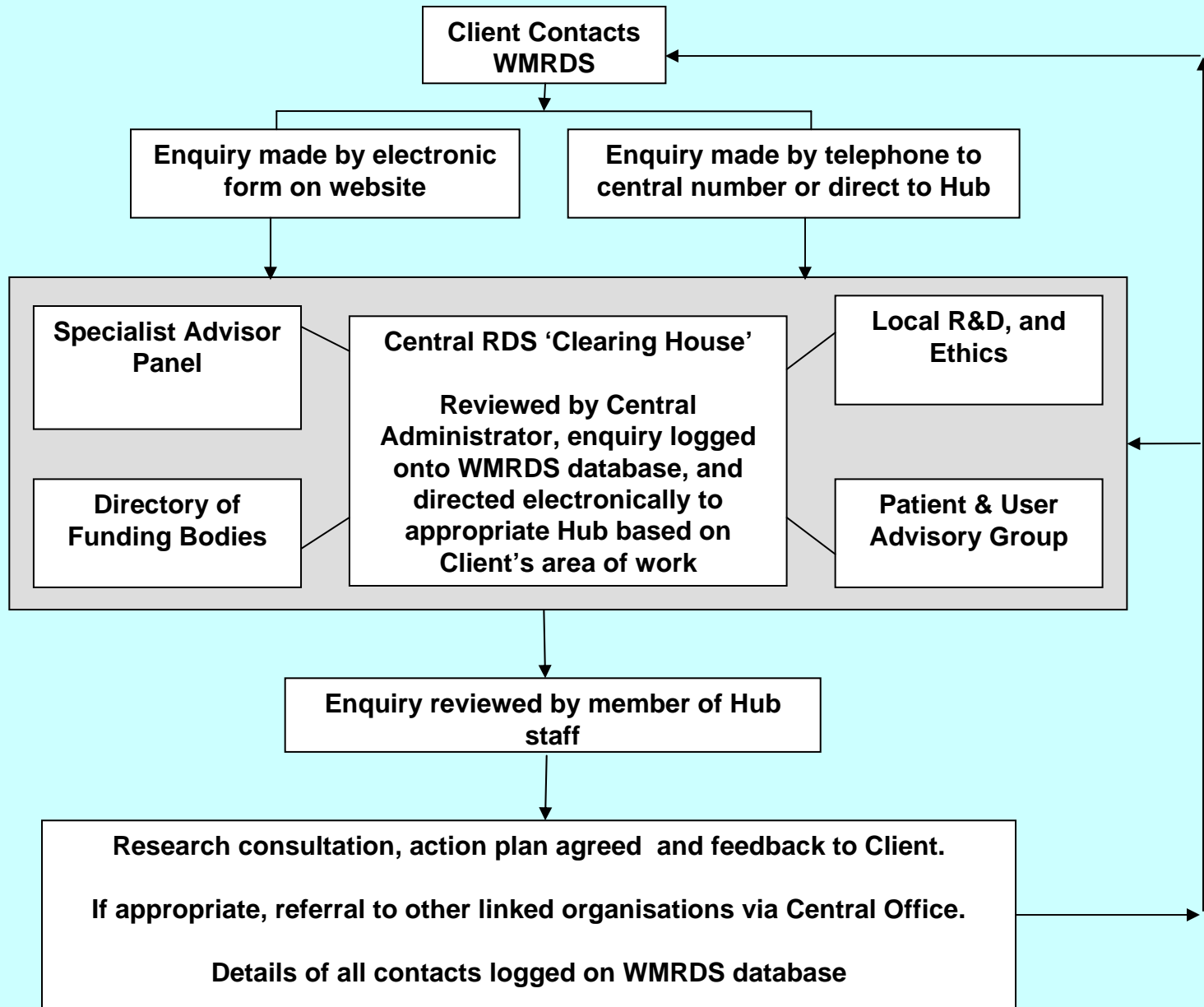
Name

Post held

Local trust, institution
or PCT

Contact details

OPERATING PROCEDURE



WHO SHOULD CONTACT THE RDS?

- **Isolated health worker / novice researcher, with a good question which they want to take further**
- **Clinical team with some research experience, need methodological support**
- **Good team, limited in some areas, e.g. health economics**
- **Strong research team limited in clinical or user areas, need specific clinical expertise or user engagement**
- **Full research team, but need governance / ethics advice**

CONTACT THE WMRDS

- **GENERAL ENQUIRIES:** **0121 414 6270**
- **BIRMINGHAM HUB:** **0121 414 7133**
- **KEELE HUB:** **01782 733905**
- **WARWICK HUB:** **02476 574530**

- **WEB:** **<http://www.rds-wm.nihr.ac.uk>**