



NIHR CLAHC  
for South Yorkshire



*National Institute for  
Health Research*

# The CLAHC-SY in the Innovation Landscape

19 October 2009

**Jo Cooke**  
Programme Manager





NIHR CLAHC  
for South Yorkshire



**NHS**

*National Institute for  
Health Research*





NIHR CLAHC  
for South Yorkshire



**NHS**

*National Institute for  
Health Research*





NIHR CLAHRC  
for South Yorkshire



**NHS**

*National Institute for  
Health Research*

***Our mission is to undertake, over the next five years, high quality, strategic, applied research and related education in order to enable a ‘step change’ in the way research is delivered and services are designed in South Yorkshire; and to foster knowledge transfer that will improve the quality and effectiveness of health care delivery across South Yorkshire.***

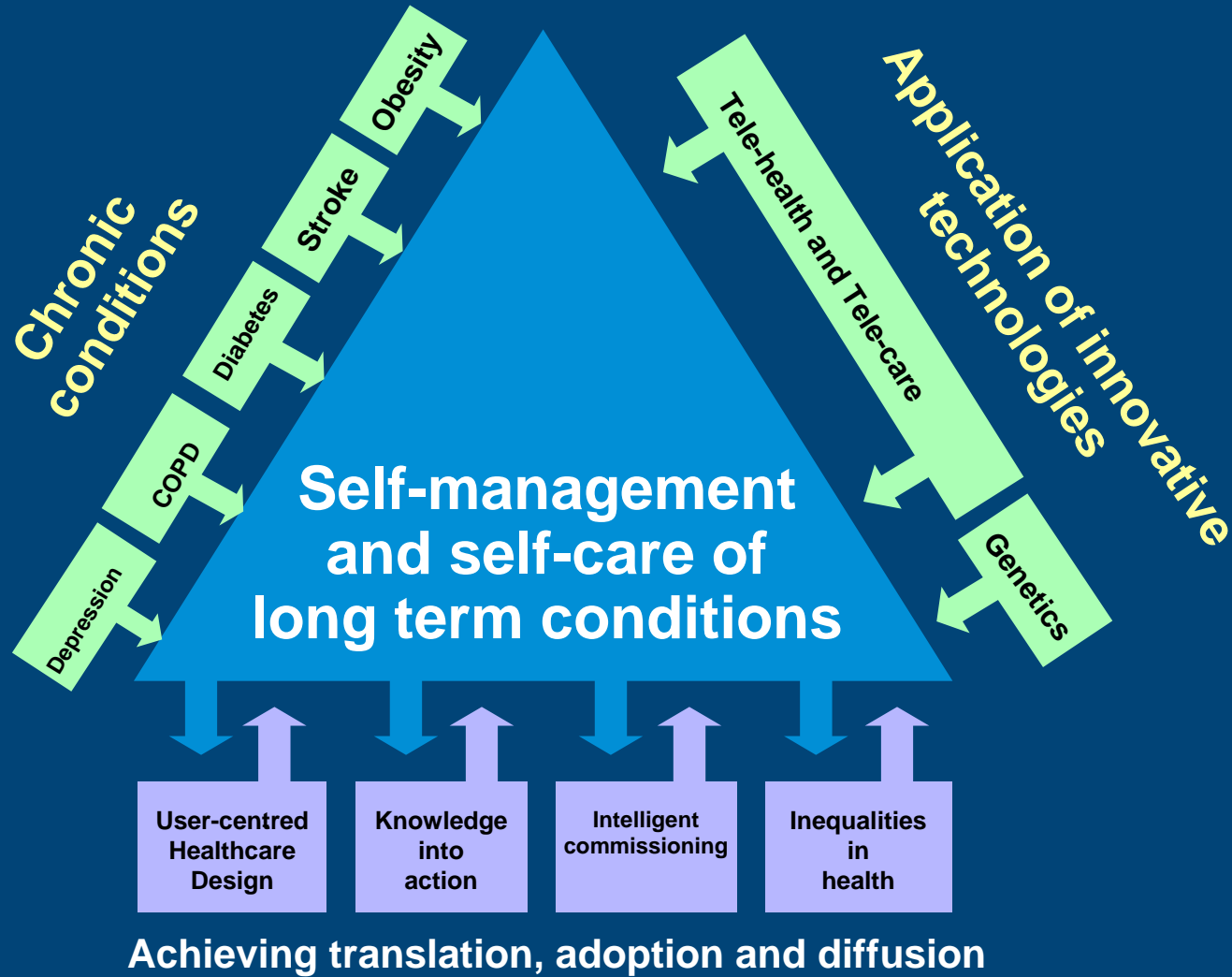


NIHR CLAHC  
for South Yorkshire



**NHS**

National Institute for  
Health Research





NIHR CLAHC  
for South Yorkshire



**NHS**

*National Institute for  
Health Research*

# CLAHRCs and the Innovation Landscapes

Innovation is the implementation (adoption and diffusion) of any practice or product that represents a conscious and significant departure from current behaviour.

Adapted from Rye and Kimberly 2007

Evaluation must be incorporated into the ongoing process of innovation implementation.

Adapted from Chapman et al 2004



NIHR CLAHC  
for South Yorkshire



**NHS**

*National Institute for  
Health Research*

## Some examples of innovation in CLAHC-SY

### ▲ Technology theme

- Telecare Project in Barnsley- Management of patients with COPD early on in the disease trajectory. RCT embedded within a service development

### ▲ Obesity theme

- Cohort multi- RCT design; Aim to embed RCTs within the Cohort as well as feed information back to the PCT to support commissioning

### ▲ Cross theme working

- Co-design using UCHD model with Young people to shape and inform diabetic services



NIHR CLAHC  
for South Yorkshire



**NHS**

*National Institute for  
Health Research*

## Some examples of innovation in CLAHC-SY

- ▲ Our Knowledge into Action theme utilises a model of evidence translation, diffusion and change behaviour based on the Canadian Knowledge to Action Cycle. (Graham et al 2006)
  - NICE guidelines on nutrition
- ▲ 'World Class Commissioning' shifts the focus of reform from provider to purchaser, our Intelligent Commissioning theme will implement change through the purchasing process
  - Learning sets across the PCTs and one practice- based commissioning group
- ▲ Our User Centred HealthCare Design theme: reconceptualise patients (and members of staff) as sources of innovation and knowledge in health care design.
  - Outpatients Department at STH



NIHR CLAHRC  
for South Yorkshire



**NHS**

*National Institute for  
Health Research*

# Research theme leads

- ▲ **Stroke** Prof Pam Enderby [p.m.enderby@sheffield.ac.uk](mailto:p.m.enderby@sheffield.ac.uk)
- ▲ **Obesity** Dr Paul Bissell [p.bissell@sheffield.ac.uk](mailto:p.bissell@sheffield.ac.uk)
- ▲ **Diabetes** Prof Simon Heller [s.heller@sheffield.ac.uk](mailto:s.heller@sheffield.ac.uk)
- ▲ **COPD** Dr Robin Carlisle [robin.carlisle@rotherhamPCT.nhs.uk](mailto:robin.carlisle@rotherhamPCT.nhs.uk)
- ▲ **Chronic Depression**  
Prof Glenys Parry [g.d.parry@sheffield.ac.uk](mailto:g.d.parry@sheffield.ac.uk)
- ▲ **Tele-health Tele-care**  
Prof Gail Mountain  
Prof Mark Hawley [a.mountain@shu.ac.uk](mailto:a.mountain@shu.ac.uk)
- ▲ **Genetics** Dr Jim Bonham [jim.bonham@sch.nhs.uk](mailto:jim.bonham@sch.nhs.uk)



NIHR CLAHC  
for South Yorkshire



**NHS**

*National Institute for  
Health Research*

# Implementation theme leads

## ▲ User centred health care design

Prof Peter Wright, Rev Mark Cobb

[p.c.wright@shu.ac.uk](mailto:p.c.wright@shu.ac.uk)

## ▲ Knowledge into Action

Prof Kate Gerrish

[k.gerrish@shu.ac.uk](mailto:k.gerrish@shu.ac.uk)

## ▲ Intelligent Commissioning

Dr Malcolm Whitfield

[m.whitfield@shu.ac.uk](mailto:m.whitfield@shu.ac.uk)

## ▲ Inequalities in health

Dr Elizabeth Goyder

[e.goyder@sheffield.ac.uk](mailto:e.goyder@sheffield.ac.uk)

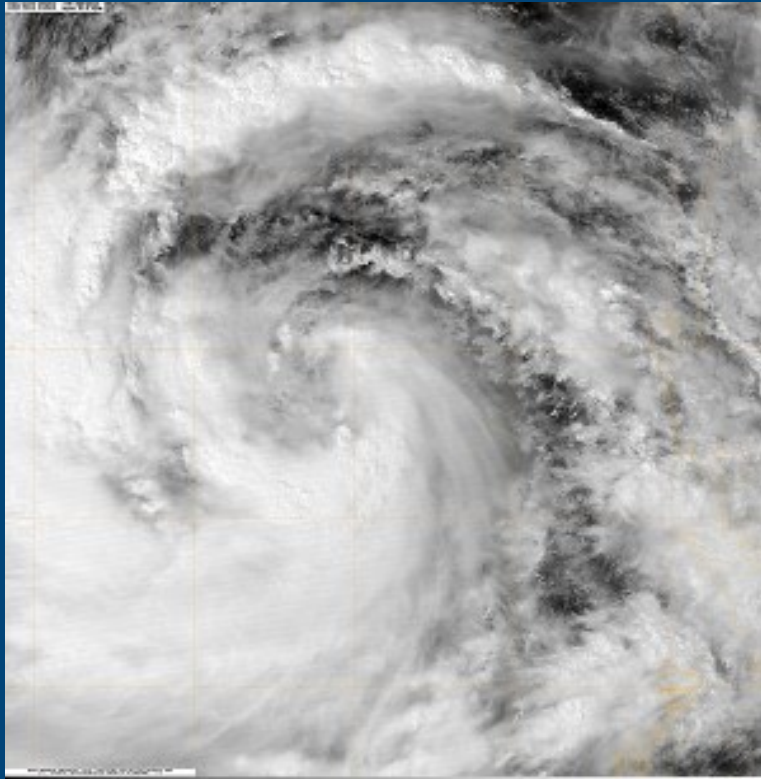


NIHR CLAHC  
for South Yorkshire



**NHS**

*National Institute for  
Health Research*



Gene Kelly "Singin' in the Rain"



NIHR CLAHC  
for South Yorkshire



**NHS**

*National Institute for  
Health Research*

*For more information please go to our web site  
at;*

[www.clahrc-sy.nihr.ac.uk](http://www.clahrc-sy.nihr.ac.uk)